



ELECTRONIC COPY

LG665415747
Report verification at igi.org



November 18, 2024

IGI Report Number **LG665415747**

Description **LABORATORY GROWN DIAMOND**

Shape and Cutting Style **CUT CORNERED
RECTANGULAR MODIFIED
BRILLIANT**

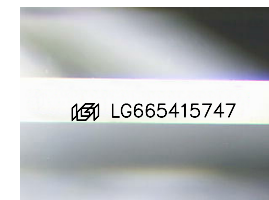
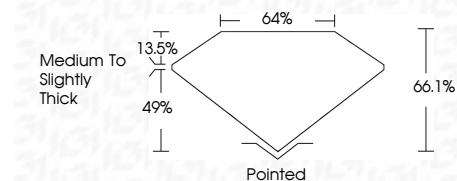
Measurements **12.47 X 8.49 X 5.61 MM**

GRADING RESULTS

Carat Weight **5.06 CARATS**

Color Grade **F**

Clarity Grade **VVS 2**



Sample Image Used

ADDITIONAL GRADING INFORMATION

Polish **EXCELLENT**

Symmetry **EXCELLENT**

Fluorescence **NONE**

Inscription(s) **IGI LG665415747**

Comments: As Grown - No indication of post-growth treatment.

This Laboratory Grown Diamond was created by High Pressure High Temperature (HPHT) growth process. Type II

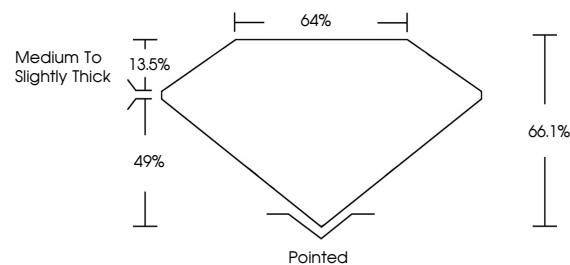


IGI

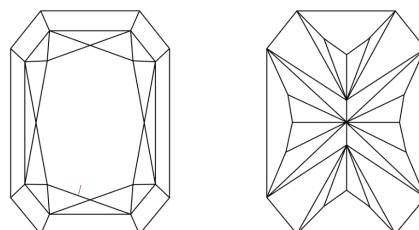
November 18, 2024	IGI Report No. LG665415747	CUT CORNERED RECT. MODIFIED BRILLIANT
12.47 X 8.49 X 5.61 MM	5.06 CARATS	F
Carat Weight	Color Grade	Clarity Grade
5.06 CARATS	VVS 2	VVS 2
Depth	Table	Graile
66.1%	49%	Medium to Slightly Thick
Culet	Polish	Symmetry
Pointed	EXCELLENT	EXCELLENT
Fluorescence	Fluorescence	Inscription(s)
NONE	NONE	IGI LG665415747

Comments: As Grown - No indication of post-growth treatment. This Laboratory Grown Diamond was created by High Pressure High Temperature (HPHT) growth process. Type II

PROPORTIONS



CLARITY CHARACTERISTICS



KEY TO SYMBOLS

Red symbols indicate internal characteristics.
Green symbols indicate external characteristics.

COLOR

D E F G H I J Faint Very Light Light

CLARITY

IF VS¹⁻² VS¹⁻² SI¹⁻² I¹⁻³

Internally Flawless Very Very Slightly Included Very Slightly Included Slightly Included Included

