

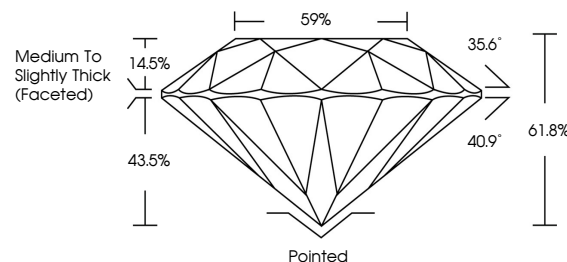


ELECTRONIC COPY

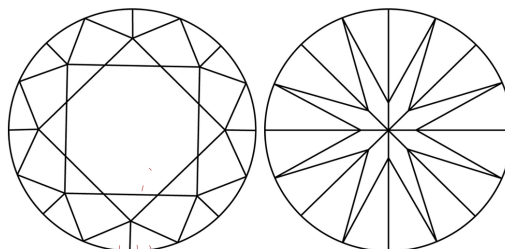
LABORATORY GROWN DIAMOND REPORT

LG665415849
Report verification at lgi.org

PROPORTIONS



CLARITY CHARACTERISTICS



KEY TO SYMBOLS

Red symbols indicate internal characteristics.
Green symbols indicate external characteristics.

COLOR

D E F G H I J Faint Very Light Light

CLARITY

IF WS¹⁻² VS¹⁻² SI¹⁻² |¹⁻³

Internally Flawless	Very Very Slightly Included	Very Slightly Included	Slightly Included	Included
------------------------	--------------------------------	---------------------------	----------------------	----------

LABORATORY GROWN DIAMOND REPORT

IGI Report Number **LG665415849**Description **LABORATORY GROWN DIAMOND**Shape and Cutting Style **ROUND BRILLIANT**

Measurements 6.56 - 6.59 X 4.06 MM

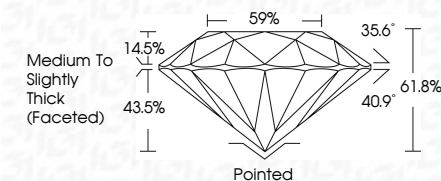
GRADING RESULTS

Carat Weight 1.08 CARAT

Color Grade D

Clarity Grade **VVS 2**

Cut Grade **IDEAL**



ADDITIONAL GRADING INFORMATION

Polish **EXCELLENT**Symmetry **EXCELLENT**Fluorescence **NONE**Inscription(s)  LG665415849

Comments: As Grown - No indication of post-growth treatment.

This Laboratory Grown Diamond was created by High Pressure High Temperature (HPHT) growth process.

Type II



© IGI 2020, International Gemological Institute

FD - 10 20

www.igi.org

THIS DOCUMENT WAS PRODUCED WITH THE FOLLOWING SECURITY MEASURES: SPECIAL DOCUMENT PAPER, INK SCREENS, WATERMARK, BACKGROUND DESIGNS, HOLOGRAM AND OTHER SECURITY FEATURES NOT LISTED AND DO EXCEED DOCUMENT SECURITY INDUSTRY GUIDELINE

November 16, 2024
GI Report No LG665415849
ROUND BRILLIANT

6.56 - 6.59 X 4.05 MM	1.08 CARAT
Color: Weight:	
Clarity: Grade:	VVS 2
Cut: Grade:	IDEAL
Depth:	61.05%
Table:	59%
Girdle:	Medium to Slightly Thick (faceted)
Culet:	Pointed
Polish:	EXCELLENT
Symmetry:	EXCELLENT
Fluorescence:	NONE
Comments:	gem 1264545161646

Comments:
As Grown - No indication of post-growth treatment.