



ELECTRONIC COPY

LG665415955
Report verification at igi.org



November 15, 2024
IGI Report Number LG665415955
Description LABORATORY GROWN DIAMOND
Shape and Cutting Style ROUND BRILLIANT
Measurements 13.60 - 13.65 X 8.10 MM
GRADING RESULTS
Carat Weight 9.16 CARATS
Color Grade F
Clarity Grade VS 1
Cut Grade EXCELLENT

LABORATORY GROWN DIAMOND REPORT

November 15, 2024
IGI Report Number LG665415955
Description LABORATORY GROWN DIAMOND
Shape and Cutting Style ROUND BRILLIANT
Measurements 13.60 - 13.65 X 8.10 MM

GRADING RESULTS

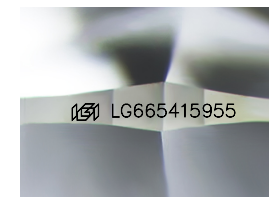
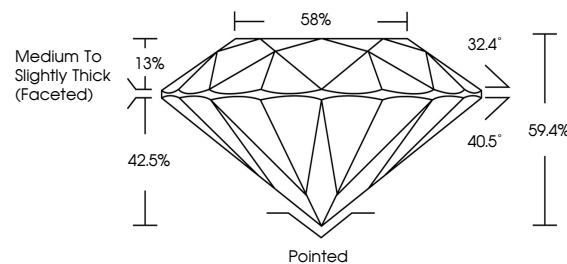
Carat Weight 9.16 CARATS
Color Grade F
Clarity Grade VS 1
Cut Grade EXCELLENT

ADDITIONAL GRADING INFORMATION

Polish EXCELLENT
Symmetry EXCELLENT
Fluorescence NONE
Inscription(s) IGI LG665415955

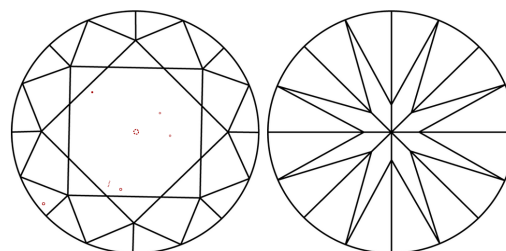
Comments: This Laboratory Grown Diamond was created by Chemical Vapor Deposition (CVD) growth process. Type IIa

PROPORTIONS



Sample Image Used

CLARITY CHARACTERISTICS



KEY TO SYMBOLS

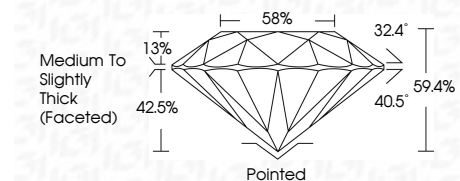
Red symbols indicate internal characteristics.
Green symbols indicate external characteristics.

COLOR

D E F G H I J Faint Very Light Light

CLARITY

IF VS 1-2 VS 1-2 SI 1-2 I 1-3
Internally Flawless Very Very Slightly Included Very Slightly Included Slightly Included Included



ADDITIONAL GRADING INFORMATION

Polish EXCELLENT
Symmetry EXCELLENT
Fluorescence NONE
Inscription(s) IGI LG665415955
Comments: This Laboratory Grown Diamond was created by Chemical Vapor Deposition (CVD) growth process. Type IIa



IGI



November 15, 2024
IGI Report No LG665415955
ROUND BRILLIANT
13.60 - 13.65 X 8.10 MM
9.16 CARATS
F
VS 1
EXCELLENT
59.4%
58%
Medium To Slightly Thick (Faceted)
Pointed
EXCELLENT
EXCELLENT
NONE
IGI LG665415955
Comments: This Laboratory Grown Diamond was created by Chemical Vapor Deposition (CVD) growth process. Type IIa