



ELECTRONIC COPY

LG665421035
Report verification at igi.org



November 15, 2024

IGI Report Number **LG665421035**

Description **LABORATORY GROWN DIAMOND**

Shape and Cutting Style **PRINCESS CUT**

Measurements **7.26 X 7.19 X 5.16 MM**

GRADING RESULTS

Carat Weight **2.52 CARATS**

Color Grade **D**

Clarity Grade **VVS 1**

LABORATORY GROWN DIAMOND REPORT

November 15, 2024

IGI Report Number **LG665421035**

Description **LABORATORY GROWN DIAMOND**

Shape and Cutting Style **PRINCESS CUT**

Measurements **7.26 X 7.19 X 5.16 MM**

GRADING RESULTS

Carat Weight **2.52 CARATS**

Color Grade **D**

Clarity Grade **VVS 1**

ADDITIONAL GRADING INFORMATION

Polish **EXCELLENT**

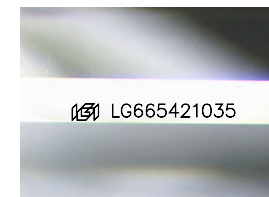
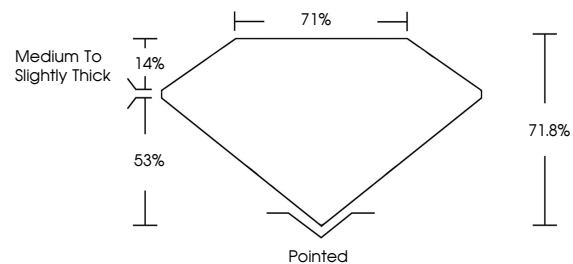
Symmetry **EXCELLENT**

Fluorescence **NONE**

Inscription(s) **IGI LG665421035**

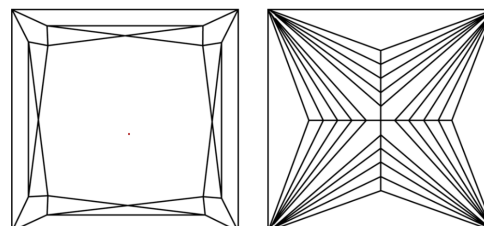
Comments: This Laboratory Grown Diamond was created by Chemical Vapor Deposition (CVD) growth process.
Type IIa

PROPORTIONS



Sample Image Used

CLARITY CHARACTERISTICS



KEY TO SYMBOLS

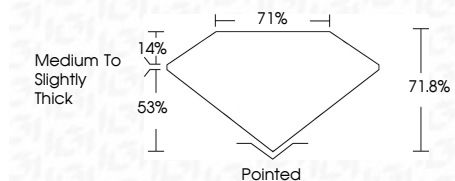
Red symbols indicate internal characteristics.
Green symbols indicate external characteristics.

COLOR

D E F G H I J Faint Very Light Light

CLARITY

IF	VS ¹⁻²	VS ¹⁻²	SI ¹⁻²	I ¹⁻³
Internally Flawless	Very Very Slightly Included	Very Slightly Included	Slightly Included	Included



ADDITIONAL GRADING INFORMATION

Polish **EXCELLENT**

Symmetry **EXCELLENT**

Fluorescence **NONE**

Inscription(s) **IGI LG665421035**

Comments: This Laboratory Grown Diamond was created by Chemical Vapor Deposition (CVD) growth process.
Type IIa



November 15, 2024
IGI Report No. LG665421035
PRINCESS CUT

7.26 X 7.19 X 5.16 MM

2.52 CARATS

Carat Weight **D**

Color Grade **VVS 1**

Clarity Grade **71.0%**

Depth **71%**

Table **Medium to Slightly Thick**

Girdle **Pointed**

Culet **EXCELLENT**

Polish **EXCELLENT**

Symmetry **NONE**

Fluorescence **IGI LG665421035**

Inscription(s)

Comments: This Laboratory Grown Diamond was created by Chemical Vapor Deposition (CVD) growth process.
Type IIa