



ELECTRONIC COPY

LG665422032
Report verification at igi.org



November 15, 2024

IGI Report Number **LG665422032**

Description **LABORATORY GROWN DIAMOND**

Shape and Cutting Style **PRINCESS CUT**

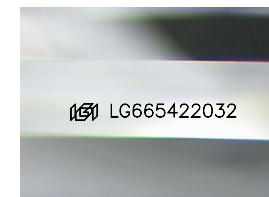
Measurements **7.09 X 6.92 X 4.46 MM**

GRADING RESULTS

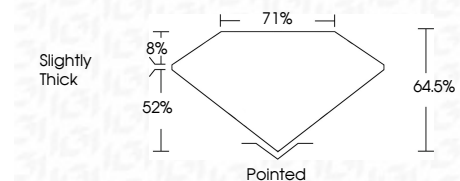
Carat Weight **2.00 CARATS**

Color Grade **D**

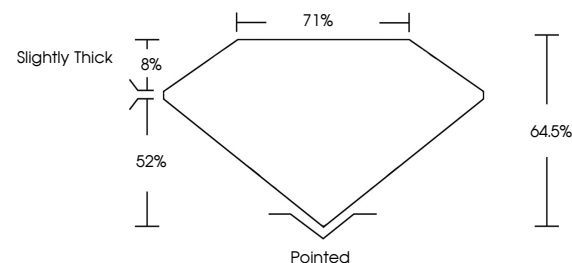
Clarity Grade **VVS 2**



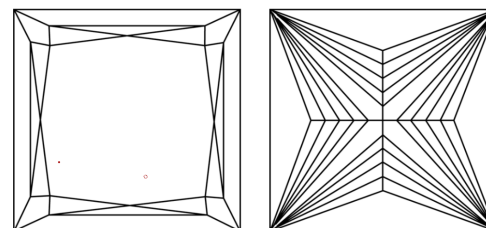
Sample Image Used



PROPORTIONS



CLARITY CHARACTERISTICS



KEY TO SYMBOLS

Red symbols indicate internal characteristics.
Green symbols indicate external characteristics.

COLOR

D E F G H I J Faint Very Light Light

CLARITY

IF	VS ¹⁻²	VS ¹⁻²	SI ¹⁻²	I ¹⁻³
Internally Flawless	Very Very Slightly Included	Very Slightly Included	Slightly Included	Included

ADDITIONAL GRADING INFORMATION

Polish **EXCELLENT**

Symmetry **EXCELLENT**

Fluorescence **NONE**

Inscription(s) **IGI LG665422032**

Comments: This Laboratory Grown Diamond was created by Chemical Vapor Deposition (CVD) growth process. Type IIa



IGI



November 15, 2024
IGI Report No LG665422032
PRINCESS CUT

2.00 CARATS
D

7.09 X 6.92 X 4.46 MM
Color Grade VS 2
Depth 64.5%
Table 71%
Girdle Slightly Thick

Pointed
EXCELLENT
EXCELLENT
NONE
IGI LG665422032

Comments: This Laboratory Grown Diamond was created by Chemical Vapor Deposition (CVD) growth process. Type IIa