



**ELECTRONIC COPY**

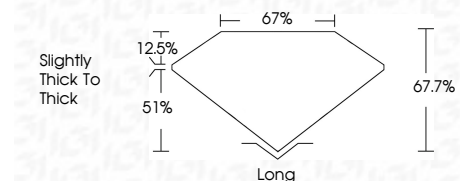
LG665422147  
Report verification at igi.org



November 30, 2024  
IGI Report Number **LG665422147**  
Description **LABORATORY GROWN DIAMOND**  
Shape and Cutting Style **MODIFIED EMERALD CUT**  
Measurements **7.06 X 6.69 X 4.53 MM**

**GRADING RESULTS**

Carat Weight **2.00 CARATS**  
Color Grade **D**  
Clarity Grade **VVS 1**



**ADDITIONAL GRADING INFORMATION**

Polish **EXCELLENT**  
Symmetry **EXCELLENT**  
Fluorescence **NONE**  
Inscription(s) **IGI LG665422147**  
Comments: This Laboratory Grown Diamond was created by Chemical Vapor Deposition (CVD) growth process. Type IIa



November 30, 2024  
IGI Report No **LG665422147**  
**MODIFIED EMERALD CUT**  
7.06 X 6.69 X 4.53 MM  
2.00 CARATS  
D  
VVS 1  
67.7%  
67%  
Slightly thick to thick  
Long  
EXCELLENT  
EXCELLENT  
NONE  
IGI LG665422147  
Comments: This Laboratory Grown Diamond was created by Chemical Vapor Deposition (CVD) growth process. Type IIa

**LABORATORY GROWN DIAMOND REPORT**

November 30, 2024  
IGI Report Number **LG665422147**  
Description **LABORATORY GROWN DIAMOND**  
Shape and Cutting Style **MODIFIED EMERALD CUT**  
Measurements **7.06 X 6.69 X 4.53 MM**

**GRADING RESULTS**

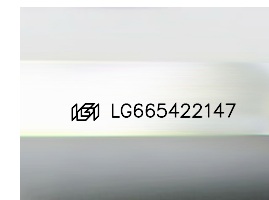
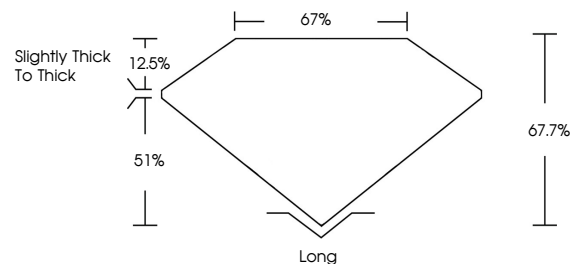
Carat Weight **2.00 CARATS**  
Color Grade **D**  
Clarity Grade **VVS 1**

**ADDITIONAL GRADING INFORMATION**

Polish **EXCELLENT**  
Symmetry **EXCELLENT**  
Fluorescence **NONE**  
Inscription(s) **IGI LG665422147**

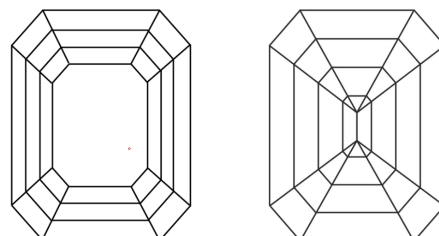
Comments: This Laboratory Grown Diamond was created by Chemical Vapor Deposition (CVD) growth process. Type IIa

**PROPORTIONS**



Sample Image Used

**CLARITY CHARACTERISTICS**



**KEY TO SYMBOLS**

Red symbols indicate internal characteristics.  
Green symbols indicate external characteristics.

**COLOR**

D E F G H I J Faint Very Light Light

**CLARITY**

IF	VS <sup>1-2</sup>	VS <sup>1-2</sup>	SI <sup>1-2</sup>	I <sup>1-3</sup>
Internally Flawless	Very Very Slightly Included	Very Slightly Included	Slightly Included	Included

