



ELECTRONIC COPY

LG665423277
Report verification at igi.org



November 15, 2024

IGI Report Number **LG665423277**

Description **LABORATORY GROWN DIAMOND**

Shape and Cutting Style **CUT CORNERED
RECTANGULAR MODIFIED
BRILLIANT**

Measurements **11.71 X 7.79 X 5.08 MM**

GRADING RESULTS

Carat Weight **4.00 CARATS**

Color Grade **E**

Clarity Grade **VS 1**

LABORATORY GROWN DIAMOND REPORT

November 15, 2024

IGI Report Number **LG665423277**

Description **LABORATORY GROWN DIAMOND**

Shape and Cutting Style **CUT CORNERED RECTANGULAR
MODIFIED BRILLIANT**

Measurements **11.71 X 7.79 X 5.08 MM**

GRADING RESULTS

Carat Weight **4.00 CARATS**

Color Grade **E**

Clarity Grade **VS 1**

ADDITIONAL GRADING INFORMATION

Polish **EXCELLENT**

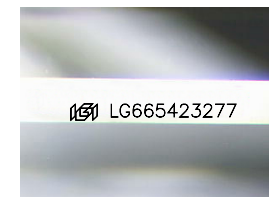
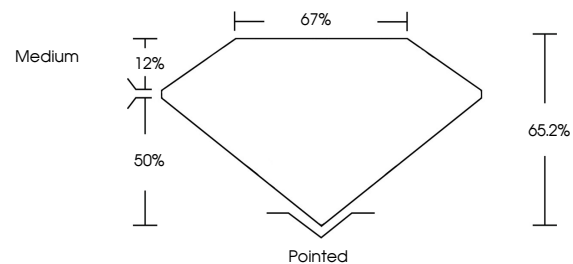
Symmetry **EXCELLENT**

Fluorescence **NONE**

Inscription(s) **IGI LG665423277**

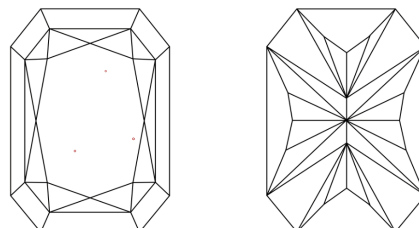
Comments: This Laboratory Grown Diamond was created by Chemical Vapor Deposition (CVD) growth process. Type IIa

PROPORTIONS



Sample Image Used

CLARITY CHARACTERISTICS



KEY TO SYMBOLS

Red symbols indicate internal characteristics.
Green symbols indicate external characteristics.

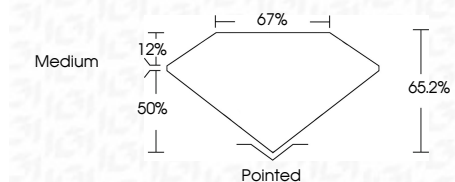
COLOR

D E F G H I J Faint Very Light Light

CLARITY

IF VS¹⁻² VS¹⁻² SI¹⁻² I¹⁻³

Internally Flawless Very Very Slightly Included Very Slightly Included Slightly Included Included



ADDITIONAL GRADING INFORMATION

Polish **EXCELLENT**

Symmetry **EXCELLENT**

Fluorescence **NONE**

Inscription(s) **IGI LG665423277**

Comments: This Laboratory Grown Diamond was created by Chemical Vapor Deposition (CVD) growth process. Type IIa



| | | | | | | | | | | | | | | |
|-------------------|---------------------------|---------------------------------------|------------------------|--------------|-------------|---------------|-------|-------|--------|---------|-----------|-----------|--------------|-----------------|
| November 15, 2024 | IGI Report No LG665423277 | CUT CORNERED RECT. MODIFIED BRILLIANT | 11.71 X 7.79 X 5.08 MM | 4.00 CARATS | E | VS 1 | 65.2% | 67% | Medium | Pointed | EXCELLENT | EXCELLENT | NONE | IGI LG665423277 |
| Polish | Symmetry | Fluorescence | Inscription(s) | Carat Weight | Color Grade | Clarity Grade | Depth | Table | Graile | Culet | Polish | Symmetry | Fluorescence | Inscription(s) |
| EXCELLENT | EXCELLENT | NONE | IGI LG665423277 | 4.00 CARATS | E | VS 1 | 65.2% | 67% | Medium | Pointed | EXCELLENT | EXCELLENT | NONE | IGI LG665423277 |

Comments: This Laboratory Grown Diamond was created by Chemical Vapor Deposition (CVD) growth process. Type IIa