



ELECTRONIC COPY

LG665423862
Report verification at igi.org



November 18, 2024
IGI Report Number **LG665423862**
Description **LABORATORY GROWN DIAMOND**

Shape and Cutting Style **SQUARE EMERALD CUT**
Measurements **7.53 X 7.50 X 4.76 MM**

GRADING RESULTS

Carat Weight **2.50 CARATS**
Color Grade **G**
Clarity Grade **VVS 2**

LABORATORY GROWN DIAMOND REPORT

November 18, 2024
IGI Report Number **LG665423862**
Description **LABORATORY GROWN DIAMOND**
Shape and Cutting Style **SQUARE EMERALD CUT**
Measurements **7.53 X 7.50 X 4.76 MM**

GRADING RESULTS

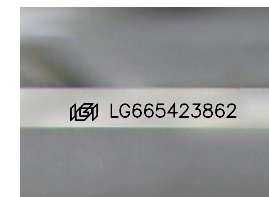
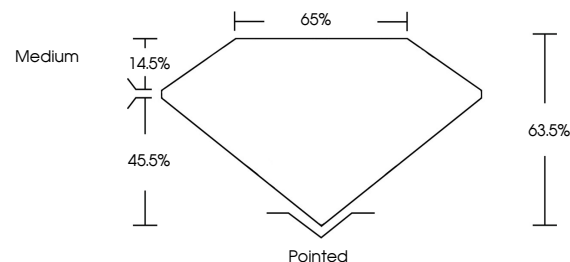
Carat Weight **2.50 CARATS**
Color Grade **G**
Clarity Grade **VVS 2**

ADDITIONAL GRADING INFORMATION

Polish **EXCELLENT**
Symmetry **EXCELLENT**
Fluorescence **NONE**
Inscription(s) **LG665423862**

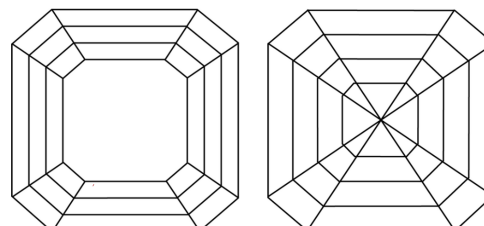
Comments: This Laboratory Grown Diamond was created by Chemical Vapor Deposition (CVD) growth process. Type IIa

PROPORTIONS



Sample Image Used

CLARITY CHARACTERISTICS



KEY TO SYMBOLS

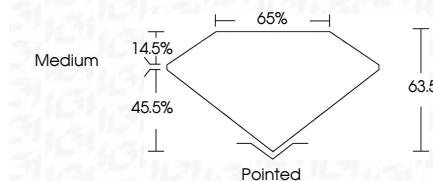
Red symbols indicate internal characteristics.
Green symbols indicate external characteristics.

COLOR

D E F G H I J Faint Very Light Light

CLARITY

IF	VS ¹⁻²	VS ¹⁻²	SI ¹⁻²	I ¹⁻³
Internally Flawless	Very Very Slightly Included	Very Slightly Included	Slightly Included	Included



ADDITIONAL GRADING INFORMATION

Polish **EXCELLENT**
Symmetry **EXCELLENT**
Fluorescence **NONE**
Inscription(s) **LG665423862**
Comments: This Laboratory Grown Diamond was created by Chemical Vapor Deposition (CVD) growth process. Type IIa



IGI



November 18, 2024
IGI Report No **LG665423862**
SQUARE EMERALD CUT
7.53 X 7.50 X 4.76 MM
2.50 CARATS
Color Grade **G**
Depth **45.5%**
Table **14.5%**
Girdle **65%**
Medium
Pointed
Polish **EXCELLENT**
Symmetry **EXCELLENT**
Fluorescence **NONE**
Inscription(s) **LG665423862**

Comments: This Laboratory Grown Diamond was created by Chemical Vapor Deposition (CVD) growth process. Type IIa