



ELECTRONIC COPY

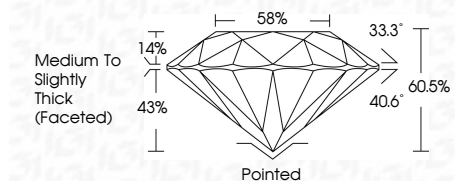
LG665424598
Report verification at igi.org



November 16, 2024
IGI Report Number LG665424598
Description LABORATORY GROWN DIAMOND
Shape and Cutting Style ROUND BRILLIANT
Measurements 6.86 - 6.89 X 4.16 MM

GRADING RESULTS

Carat Weight 1.20 CARAT
Color Grade E
Clarity Grade VVS 2
Cut Grade IDEAL

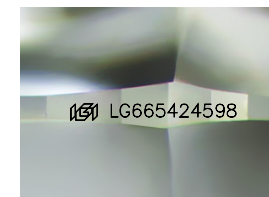


ADDITIONAL GRADING INFORMATION

Polish EXCELLENT
Symmetry EXCELLENT
Fluorescence NONE
Inscription(s) IGI LG665424598
Comments: As Grown - No indication of post-growth treatment.
This Laboratory Grown Diamond was created by High Pressure High Temperature (HPHT) growth process.
Type II

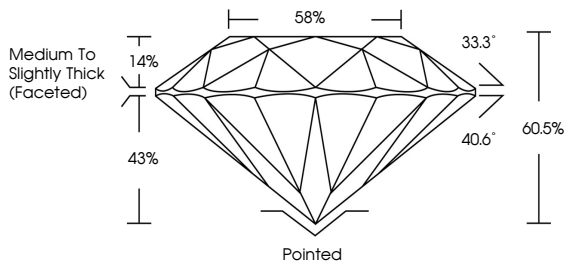


November 16, 2024
IGI Report No LG665424598
ROUND BRILLIANT
6.86 - 6.89 X 4.16 MM
1.20 CARAT E
Color Grade VVS 2
Clarity Grade IDEAL
Depth 60.5%
Table 58%
Medium To Slightly Thick (Faceted)
Pointed EXCELLENT
Culet NONE
Polish EXCELLENT
Symmetry EXCELLENT
Fluorescence NONE
Inscriptions(s) IGI LG665424598
Comments: As Grown - No indication of post-growth treatment.
This Laboratory Grown Diamond was created by High Pressure High Temperature (HPHT) growth process.
Type II

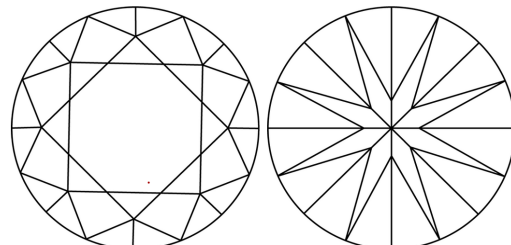


Sample Image Used

PROPORTIONS



CLARITY CHARACTERISTICS



KEY TO SYMBOLS

Red symbols indicate internal characteristics.
Green symbols indicate external characteristics.

COLOR

Table with color grades: D, E, F, G, H, I, J, Faint, Very Light, Light

CLARITY

Table with clarity grades: IF, VVS 1-2, VS 1-2, SI 1-2, I 1-3, Internally Flawless, Very Very Slightly Included, Very Slightly Included, Slightly Included, Included

