



**INTERNATIONAL
GEMOLOGICAL
INSTITUTE**

LABORATORY GROWN DIAMOND REPORT

November 27, 2024

IGI Report Number **LG665437609**

Description **LABORATORY GROWN DIAMOND**

Shape and Cutting Style **CUT CORNERED RECTANGULAR MODIFIED
BRILLIANT**

Measurements **6.27 X 4.61 X 3.24 MM**

GRADING RESULTS

Carat Weight **0.91 CARAT**

Color Grade **FANCY VIVID GREEN**

Clarity Grade **VVS 2**

ADDITIONAL GRADING INFORMATION

Polish **VERY GOOD**

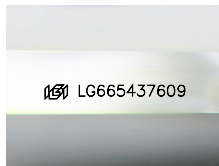
Symmetry **VERY GOOD**

Fluorescence **NONE**

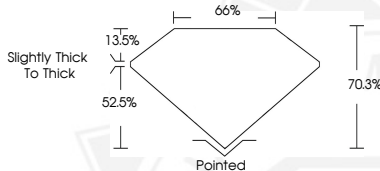
Inscription(s) **IGI LG665437609**

Comments: This Laboratory Grown Diamond was created by High Pressure High Temperature (HPHT) growth process. Indications of post-growth treatment.

ELECTRONIC COPY



Sample Image Used



November 27, 2024

IGI Report Number **LG665437609**

**CUT CORNERED RECTANGULAR
MODIFIED BRILLIANT**

LABORATORY GROWN DIAMOND

6.27 X 4.61 X 3.24 MM

Carat Weight **0.91 CARAT**

Color Grade **FANCY VIVID GREEN**

Clarity Grade **VVS 2**

Polish **VERY GOOD**

Symmetry **VERY GOOD**

Fluorescence **NONE**

Inscription(s) **IGI LG665437609**

Comments: This Laboratory Grown Diamond was created by High Pressure High Temperature (HPHT) growth process. Indications of post-growth treatment.



November 27, 2024

IGI Report Number **LG665437609**

**CUT CORNERED RECTANGULAR
MODIFIED BRILLIANT**

LABORATORY GROWN DIAMOND

6.27 X 4.61 X 3.24 MM

Carat Weight **0.91 CARAT**

Color Grade **FANCY VIVID GREEN**

Clarity Grade **VVS 2**

Polish **VERY GOOD**

Symmetry **VERY GOOD**

Fluorescence **NONE**

Inscription(s) **IGI LG665437609**

Comments: This Laboratory Grown Diamond was created by High Pressure High Temperature (HPHT) growth process. Indications of post-growth treatment.



THIS DOCUMENT WAS PRODUCED WITH THE FOLLOWING SECURITY MEASURES: SPECIAL DOCUMENT PAPER, INK SCREENS, WATERMARK, BACKGROUND DESIGN, HOLOGRAM AND OTHER SECURITY FEATURES NOT LISTED AND DO EXCEED DOCUMENT SECURITY INDUSTRY GUIDELINES.

For terms & conditions and to verify this report, please visit www.igi.org