

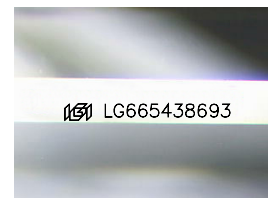
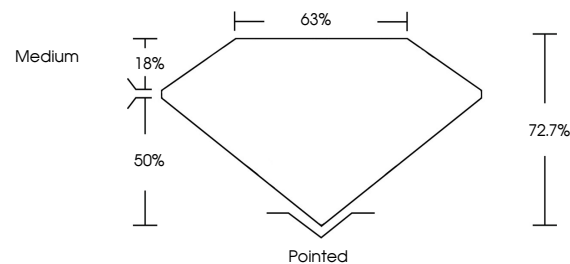


**ELECTRONIC COPY**

## LABORATORY GROWN DIAMOND REPORT

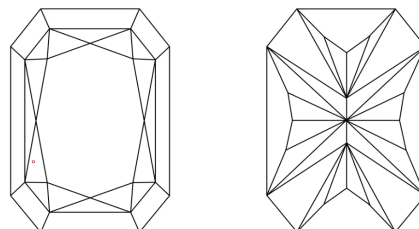
LG665438693  
Report verification at [igi.org](https://igi.org)

## PROPORTIONS



Sample Image Used

## CLARITY CHARACTERISTICS



## KEY TO SYMBOLS

Red symbols indicate internal characteristics.  
Green symbols indicate external characteristics.

## COLOR

D E F G H I J Faint Very Light Light

## CLARITY

IF	VS <sup>1-2</sup>	VS <sup>1-2</sup>	SI <sup>1-2</sup>	I <sup>1-3</sup>
Internally Flawless	Very Very Slightly Included	Very Slightly Included	Slightly Included	Included

## LABORATORY GROWN DIAMOND REPORT



November 20, 2024

IGI Report Number **LG665438693**Description **LABORATORY GROWN DIAMOND**

Shape and Cutting Style

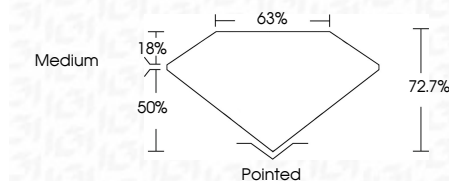
Measurements **7.33 X 4.95 X 3.60 MM**

## GRADING RESULTS

Carat Weight **1.15 CARAT**

Color Grade E

Clarity Grade VS 1



### ADDITIONAL GRADING INFORMATION

Polish EXCELLENT

Symmetry **EXCELLENT**Fluorescence **NONE**Inscription(s)  LG665438693

Comments: This Laboratory Grown Diamond was created by Chemical Vapor Deposition (CVD) growth process.  
Type IIa



© IGI 2020, International Gemological Institute

FD - 10 20

**www.igi.org**

THIS DOCUMENT WAS PRODUCED WITH THE FOLLOWING SECURITY MEASURES: SPECIAL DOCUMENT PAPER, INK SCREENS, WATERMARK, BACKGROUND DESIGNS, HOLOGRAM AND OTHER SECURITY FEATURES NOT LISTED AND DO EXCEED DOCUMENT SECURITY INDUSTRY GUIDELINE

November 20, 2024	GI Report No. LG45589693
CUT CORNERED RECT. MODIFIED BRILLIANT	
33 X 33 X 4.95 X 3.60 MM	1.15 CARAT
Carat Weight	E
Color Grade	VS 1
Clarity Grade	72.7%
Depth	65%
Table	Medium
Girdle	
Culet	Pointed
Polish	EXCELLENT
Symmetry	EXCELLENT
Fluorescence	NONE
Inscriptions(s)	6811 LG45589693

Comments: Laboratory Grown Diamond was created by Chemical Vapor Deposition (CVD) growth process.

Type IIa