



ELECTRONIC COPY

LG665438934
Report verification at igi.org



November 22, 2024

IGI Report Number **LG665438934**

Description **LABORATORY GROWN DIAMOND**

Shape and Cutting Style **OVAL BRILLIANT**

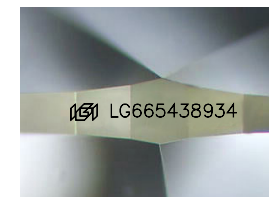
Measurements **12.02 X 8.22 X 5.12 MM**

GRADING RESULTS

Carat Weight **3.21 CARATS**

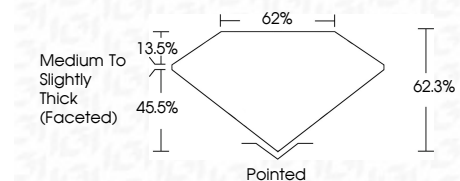
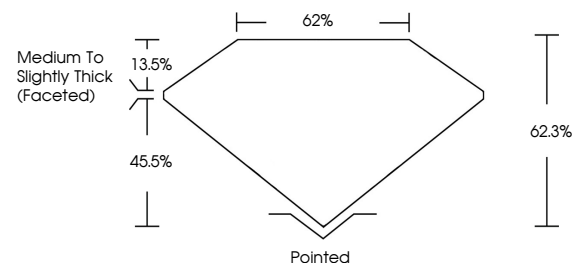
Color Grade **E**

Clarity Grade **VS 1**

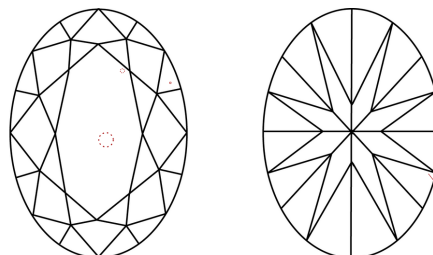


Sample Image Used

PROPORTIONS



CLARITY CHARACTERISTICS



KEY TO SYMBOLS

Red symbols indicate internal characteristics.
Green symbols indicate external characteristics.

COLOR

D E F G H I J Faint Very Light Light

CLARITY

IF	VS ¹⁻²	VS ¹⁻²	SI ¹⁻²	I ¹⁻³
Internally Flawless	Very Very Slightly Included	Very Slightly Included	Slightly Included	Included

ADDITIONAL GRADING INFORMATION

Polish **EXCELLENT**

Symmetry **EXCELLENT**

Fluorescence **NONE**

Inscription(s) **IGI LG665438934**

Comments: This Laboratory Grown Diamond was created by Chemical Vapor Deposition (CVD) growth process. Type IIa



November 22, 2024
IGI Report No LG665438934

OVAL BRILLIANT

12.02 X 8.22 X 5.12 MM

3.21 CARATS

E

VS 1

62.3%

62%

Medium to Slightly Thick (Faceted)

Pointed

EXCELLENT

EXCELLENT

NONE

IGI LG665438934

Comments: This Laboratory Grown Diamond was created by Chemical Vapor Deposition (CVD) growth process. Type IIa