



ELECTRONIC COPY

LG665442460 Report verification at igi.org



December 10, 2024 IGI Report Number LG665442460 Description LABORATORY GROWN DIAMOND Shape and Cutting Style ROUND BRILLIANT Measurements 10.32 - 10.39 X 6.14 MM GRADING RESULTS Carat Weight 4.02 CARATS Color Grade G Clarity Grade SI 1 Cut Grade EXCELLENT

LABORATORY GROWN DIAMOND REPORT

December 10, 2024 IGI Report Number LG665442460 Description LABORATORY GROWN DIAMOND Shape and Cutting Style ROUND BRILLIANT Measurements 10.32 - 10.39 X 6.14 MM

GRADING RESULTS

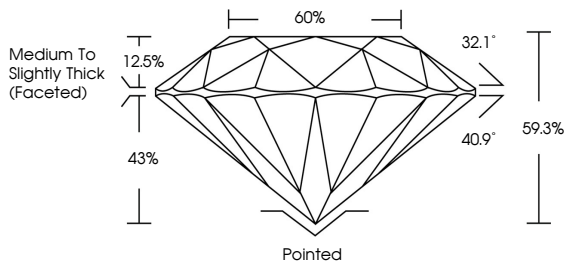
Carat Weight 4.02 CARATS Color Grade G Clarity Grade SI 1 Cut Grade EXCELLENT

ADDITIONAL GRADING INFORMATION

Polish EXCELLENT Symmetry EXCELLENT Fluorescence NONE Inscription(s) IGI LG665442460

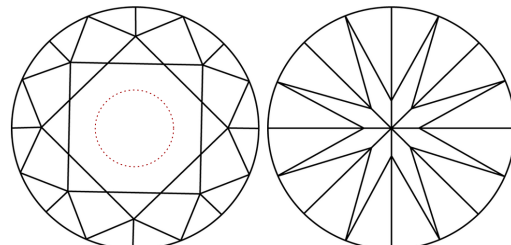
Comments: This Laboratory Grown Diamond was created by Chemical Vapor Deposition (CVD) growth process. Type IIa

PROPORTIONS



Sample Image Used

CLARITY CHARACTERISTICS



KEY TO SYMBOLS

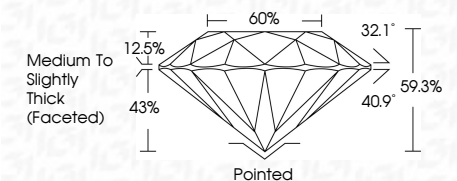
Red symbols indicate internal characteristics. Green symbols indicate external characteristics.

COLOR

Color scale table with categories D, E, F, G, H, I, J, Faint, Very Light, Light.

CLARITY

Clarity scale table with categories IF, VS 1-2, VS 1-2, SI 1-2, I 1-3, Internally Flawless, Very Very Slightly Included, Very Slightly Included, Slightly Included, Included.



ADDITIONAL GRADING INFORMATION

Polish EXCELLENT Symmetry EXCELLENT Fluorescence NONE Inscription(s) IGI LG665442460 Comments: This Laboratory Grown Diamond was created by Chemical Vapor Deposition (CVD) growth process. Type IIa



Summary table of report details: December 10, 2024, IGI Report No LG665442460, ROUND BRILLIANT, 10.32 - 10.39 X 6.14 MM, 4.02 CARATS, G, SI 1, EXCELLENT, 59.3%, 60%, Medium To Slightly Thick (Faceted), Pointed, EXCELLENT, EXCELLENT, NONE, IGI LG665442460. Comments: This Laboratory Grown Diamond was created by Chemical Vapor Deposition (CVD) growth process. Type IIa