

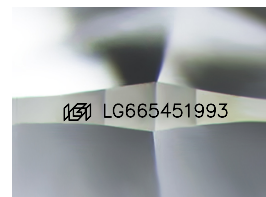
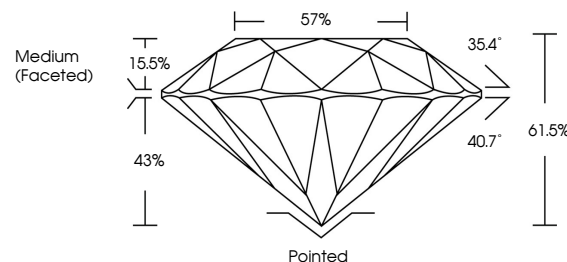


ELECTRONIC COPY

LABORATORY GROWN DIAMOND REPORT

LG665451993
Report verification at igi.org

PROPORTIONS



Sample Image Used

CLARITY CHARACTERISTICS



KEY TO SYMBOLS

Red symbols indicate internal characteristics.
Green symbols indicate external characteristics.

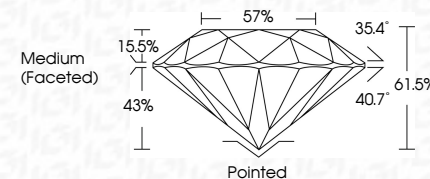


www.igi.org

LABORATORY GROWN DIAMOND REPORT



November 18, 2024	
IGI Report Number	LG665451993
Description	LABORATORY GROWN DIAMOND
Shape and Cutting Style	ROUND BRILLIANT
Measurements	8.49 - 8.52 X 5.23 MM
GRADING RESULTS	
Carat Weight	2.31 CARATS
Color Grade	D
Clarity Grade	INTERNALLY FLAWLESS
Cut Grade	IDEAL



ADDITIONAL GRADING INFORMATION

Polish	EXCELLENT
Symmetry	EXCELLENT
Fluorescence	NONE
Inscription(s)	 LG665451993
Comments: HEARTS & ARROWS	
As Grown - No indication of post-growth treatment.	
This Laboratory Grown Diamond was created by High Pressure High Temperature (HPHT) growth process.	
Type II	



IG

© IGI 2020, International Gemological Institute

FD - 10 20



THIS DOCUMENT WAS PRODUCED WITH THE FOLLOWING SECURITY MEASURES: SPECIAL DOCUMENT PAPER, INK SCREENS, WATERMARK, BACKGROUND DESIGNS, HOLOGRAM AND OTHER SECURITY FEATURES NOT LISTED AND DO EXCEED DOCUMENT SECURITY INDUSTRY GUIDELINE

November 18, 2024
GI Report No LG665451993
ROUND BRILLIANT

4.9 - 8.52 X 5.23 MM	Coral Weight	2.31 CARATS
	Color Grade	D
	Clarity Grade	IF
	Cut Grade	IDEAL
	Depth	61.65%
	Table	57%
	Grade	Medium (Faceted)
	Culet	Pointed
	Polish	EXCELLENT
	Symmetry	EXCELLENT
	Fluorescence	NONE
	Fluorescence Color	None/Very Faint Blue

Comments:
HEARTS & ARROWS
As Grown - No indication of post-growth treatment.
This Laboratory Grown Diamond was created by High Pressure High temperature (HPHT) growth process.