



ELECTRONIC COPY

LABORATORY GROWN DIAMOND REPORT

November 19, 2024
IGI Report Number LG666401600
Description LABORATORY GROWN DIAMOND
Shape and Cutting Style PRINCESS CUT
Measurements 6.45 X 6.42 X 4.47 MM

GRADING RESULTS

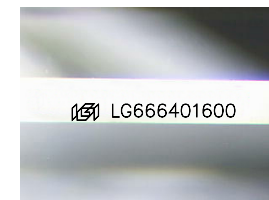
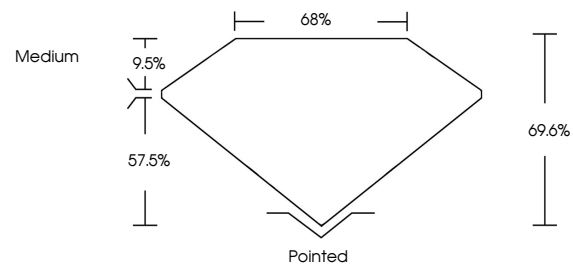
Carat Weight 1.57 CARAT
Color Grade F
Clarity Grade VS 1

ADDITIONAL GRADING INFORMATION

Polish EXCELLENT
Symmetry EXCELLENT
Fluorescence NONE
Inscription(s) IGI LG666401600

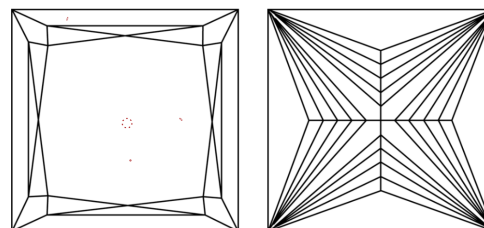
Comments: This Laboratory Grown Diamond was created by Chemical Vapor Deposition (CVD) growth process. Type IIa

PROPORTIONS



Sample Image Used

CLARITY CHARACTERISTICS



KEY TO SYMBOLS

Red symbols indicate internal characteristics.
Green symbols indicate external characteristics.

COLOR

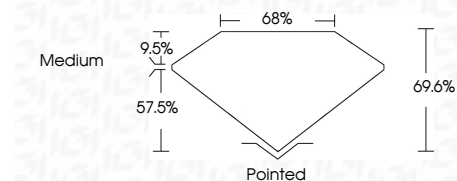
D E F G H I J Faint Very Light Light

CLARITY

IF VS 1-2 VS 1-2 SI 1-2 I 1-3
Internally Flawless Very Very Slightly Included Very Slightly Included Slightly Included Included



November 19, 2024
IGI Report Number LG666401600
Description LABORATORY GROWN DIAMOND
Shape and Cutting Style PRINCESS CUT
Measurements 6.45 X 6.42 X 4.47 MM
GRADING RESULTS
Carat Weight 1.57 CARAT
Color Grade F
Clarity Grade VS 1



ADDITIONAL GRADING INFORMATION

Polish EXCELLENT
Symmetry EXCELLENT
Fluorescence NONE
Inscription(s) IGI LG666401600
Comments: This Laboratory Grown Diamond was created by Chemical Vapor Deposition (CVD) growth process. Type IIa



November 19, 2024
IGI Report No LG666401600
PRINCESS CUT
6.45 X 6.42 X 4.47 MM
1.57 CARAT
F
VS 1
69.6%
65%
Medium
Pointed
EXCELLENT
EXCELLENT
NONE
IGI LG666401600
Comments: This Laboratory Grown Diamond was created by Chemical Vapor Deposition (CVD) growth process. Type IIa