



ELECTRONIC COPY

LG666403772
Report verification at igi.org



November 23, 2024

IGI Report Number **LG666403772**

Description **LABORATORY GROWN DIAMOND**

Shape and Cutting Style **ROUND BRILLIANT**

Measurements **7.38 - 7.44 X 4.58 MM**

GRADING RESULTS

Carat Weight **1.54 CARAT**

Color Grade **D**

Clarity Grade **VVS 2**

Cut Grade **IDEAL**

November 23, 2024
IGI Report Number **LG666403772**
Description **LABORATORY GROWN DIAMOND**
Shape and Cutting Style **ROUND BRILLIANT**
Measurements **7.38 - 7.44 X 4.58 MM**

GRADING RESULTS

Carat Weight **1.54 CARAT**

Color Grade **D**

Clarity Grade **VVS 2**

Cut Grade **IDEAL**

ADDITIONAL GRADING INFORMATION

Polish **EXCELLENT**

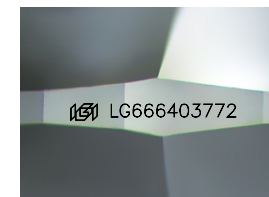
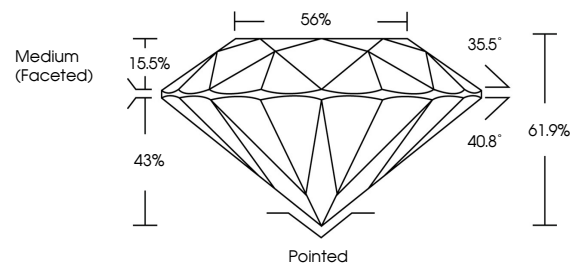
Symmetry **EXCELLENT**

Fluorescence **NONE**

Inscription(s) **LG666403772**

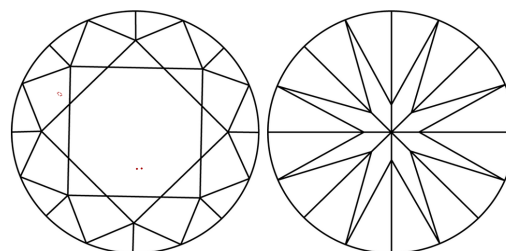
Comments: This Laboratory Grown Diamond was created by Chemical Vapor Deposition (CVD) growth process.
Type IIa

PROPORTIONS



Sample Image Used

CLARITY CHARACTERISTICS



KEY TO SYMBOLS

Red symbols indicate internal characteristics.
Green symbols indicate external characteristics.

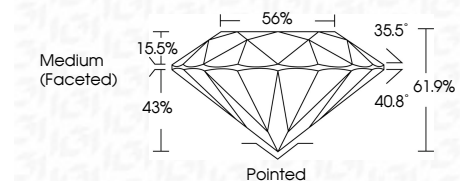
COLOR

D E F G H I J Faint Very Light Light

CLARITY

IF VS¹⁻² VS¹⁻² SI¹⁻² I¹⁻³

Internally Flawless Very Very Slightly Included Very Slightly Included Slightly Included Included



ADDITIONAL GRADING INFORMATION

Polish **EXCELLENT**

Symmetry **EXCELLENT**

Fluorescence **NONE**

Inscription(s) **LG666403772**

Comments: This Laboratory Grown Diamond was created by Chemical Vapor Deposition (CVD) growth process.
Type IIa



IGI



| | | |
|---------------------------|------------------|-----------|
| November 23, 2024 | 1.54 CARAT | Pointed |
| IGI Report No LG666403772 | D | EXCELLENT |
| ROUND BRILLIANT | VVS 2 | EXCELLENT |
| 7.38 - 7.44 X 4.58 MM | IDEAL | NONE |
| Carat Weight | 61.9% | NONE |
| Color Grade | 56% | None |
| Clarity Grade | Medium (Faceted) | None |
| Cut Grade | IGI LG666403772 | |
| Depth | | |
| Table | | |
| Girdle | | |
| Polish | | |
| Symmetry | | |
| Fluorescence | | |
| Inscription(s) | | |

Comments: This Laboratory Grown Diamond was created by Chemical Vapor Deposition (CVD) growth process.
Type IIa