



ELECTRONIC COPY

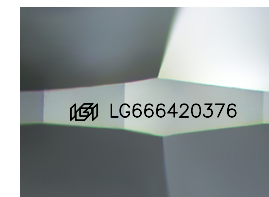
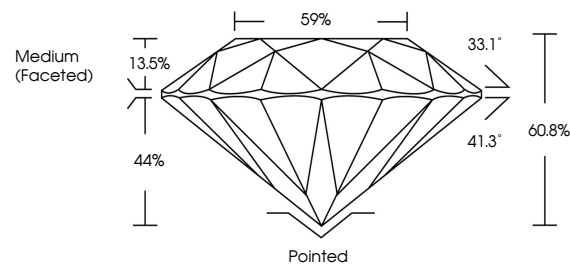
LG666420376
Report verification at igi.org



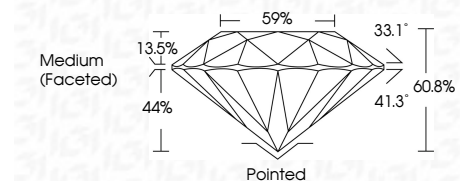
November 22, 2024
IGI Report Number LG666420376
Description LABORATORY GROWN DIAMOND
Shape and Cutting Style ROUND BRILLIANT
Measurements 7.40 - 7.43 X 4.51 MM
GRADING RESULTS
Carat Weight 1.52 CARAT
Color Grade G
Clarity Grade VS 1
Cut Grade IDEAL

November 22, 2024
IGI Report Number LG666420376
Description LABORATORY GROWN DIAMOND
Shape and Cutting Style ROUND BRILLIANT
Measurements 7.40 - 7.43 X 4.51 MM

PROPORTIONS



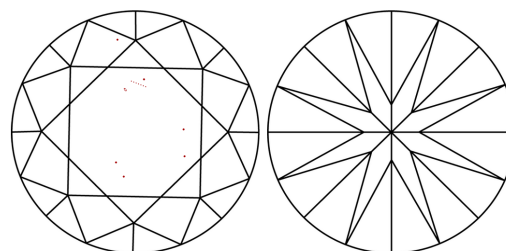
Sample Image Used



GRADING RESULTS

Carat Weight 1.52 CARAT
Color Grade G
Clarity Grade VS 1
Cut Grade IDEAL

CLARITY CHARACTERISTICS



KEY TO SYMBOLS

Red symbols indicate internal characteristics.
Green symbols indicate external characteristics.

ADDITIONAL GRADING INFORMATION

Polish EXCELLENT
Symmetry EXCELLENT
Fluorescence NONE
Inscription(s) IGI LG666420376

COLOR

D E F G H I J Faint Very Light Light

CLARITY

IF WS 1-2 VS 1-2 SI 1-2 I 1-3
Internally Flawless Very Very Slightly Included Very Slightly Included Slightly Included Included

ADDITIONAL GRADING INFORMATION

Polish EXCELLENT
Symmetry EXCELLENT
Fluorescence NONE
Inscription(s) IGI LG666420376
Comments: This Laboratory Grown Diamond was created by Chemical Vapor Deposition (CVD) growth process. Type IIa

Comments: This Laboratory Grown Diamond was created by Chemical Vapor Deposition (CVD) growth process. Type IIa



November 22, 2024
IGI Report No LG666420376
ROUND BRILLIANT
7.40 - 7.43 X 4.51 MM
1.52 CARAT
Color Grade G
Clarity Grade VS 1
Depth IDEAL
Table 60.8%
Girdle 59%
Medium (Faceted)
Culet Pointed
Polish EXCELLENT
Symmetry EXCELLENT
Fluorescence NONE
Inscription(s) IGI LG666420376
Comments: This Laboratory Grown Diamond was created by Chemical Vapor Deposition (CVD) growth process. Type IIa