



**ELECTRONIC COPY**

LG666424116  
Report verification at igi.org



November 26, 2024

IGI Report Number **LG666424116**

Description **LABORATORY GROWN DIAMOND**

Shape and Cutting Style **ROUND BRILLIANT**

Measurements **8.43 - 8.48 X 5.18 MM**

**GRADING RESULTS**

Carat Weight **2.28 CARATS**

Color Grade **E**

Clarity Grade **VS 1**

Cut Grade **IDEAL**

November 26, 2024  
IGI Report Number **LG666424116**  
Description **LABORATORY GROWN DIAMOND**  
Shape and Cutting Style **ROUND BRILLIANT**  
Measurements **8.43 - 8.48 X 5.18 MM**

**GRADING RESULTS**

Carat Weight **2.28 CARATS**

Color Grade **E**

Clarity Grade **VS 1**

Cut Grade **IDEAL**

**ADDITIONAL GRADING INFORMATION**

Polish **EXCELLENT**

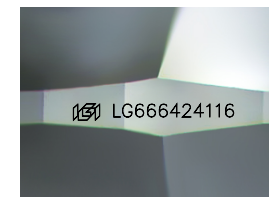
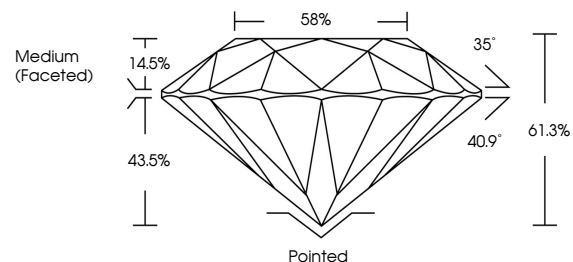
Symmetry **EXCELLENT**

Fluorescence **NONE**

Inscription(s) **LG666424116**

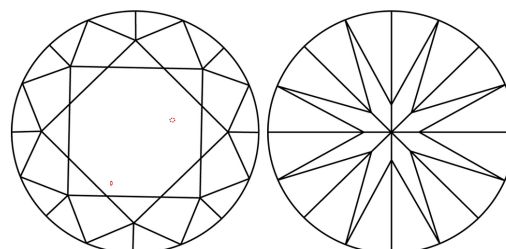
Comments: HEARTS & ARROWS  
This Laboratory Grown Diamond was created by  
Chemical Vapor Deposition (CVD) growth process.  
Type IIa

**PROPORTIONS**



Sample Image Used

**CLARITY CHARACTERISTICS**



**KEY TO SYMBOLS**

Red symbols indicate internal characteristics.  
Green symbols indicate external characteristics.



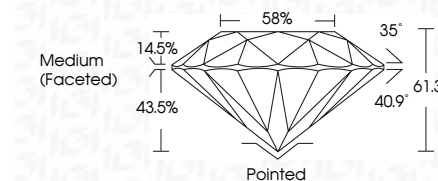
**COLOR**

D E F G H I J Faint Very Light Light

**CLARITY**

IF VS<sup>1-2</sup> VS<sup>1-2</sup> SI<sup>1-2</sup> I<sup>1-3</sup>

Internally Flawless Very Very Slightly Included Very Slightly Included Slightly Included Included



**ADDITIONAL GRADING INFORMATION**

Polish **EXCELLENT**

Symmetry **EXCELLENT**

Fluorescence **NONE**

Inscription(s) **LG666424116**

Comments: HEARTS & ARROWS  
This Laboratory Grown Diamond was created by  
Chemical Vapor Deposition (CVD) growth process.  
Type IIa



**IGI**



November 26, 2024  
IGI Report No **LG666424116**  
**ROUND BRILLIANT**  
**8.43 - 8.48 X 5.18 MM**  
Carat Weight **2.28 CARATS**  
Color Grade **E**  
Clarity Grade **VS 1**  
Cut Grade **IDEAL**  
Depth **61.3%**  
Table **14.5%**  
Girdle **Medium (Faceted)**  
Culet **Pointed**  
Polish **EXCELLENT**  
Symmetry **EXCELLENT**  
Fluorescence **NONE**  
Inscriptions(s) **LG666424116**  
Comments: **Hearts & Arrows**  
This Laboratory Grown Diamond was created by **Chemical Vapor Deposition (CVD)** growth process.  
Type **IIa**