



ELECTRONIC COPY

LG666438216 Report verification at igi.org



November 25, 2024 IGI Report Number LG666438216 Description LABORATORY GROWN DIAMOND Shape and Cutting Style CUT CORNERED RECTANGULAR MODIFIED BRILLIANT Measurements 9.92 X 6.60 X 4.44 MM GRADING RESULTS Carat Weight 2.53 CARATS Color Grade G Clarity Grade VS 2

November 25, 2024 IGI Report Number LG666438216 Description LABORATORY GROWN DIAMOND Shape and Cutting Style CUT CORNERED RECTANGULAR MODIFIED BRILLIANT Measurements 9.92 X 6.60 X 4.44 MM

GRADING RESULTS

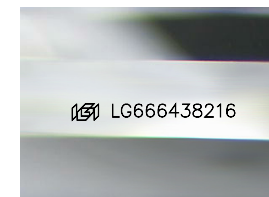
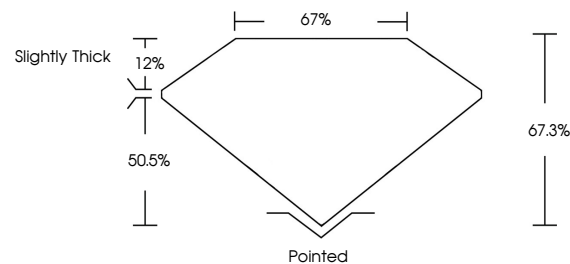
Carat Weight 2.53 CARATS Color Grade G Clarity Grade VS 2

ADDITIONAL GRADING INFORMATION

Polish EXCELLENT Symmetry EXCELLENT Fluorescence NONE Inscription(s) IGI LG666438216

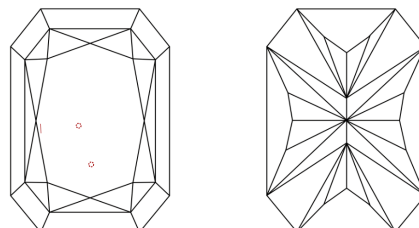
Comments: This Laboratory Grown Diamond was created by Chemical Vapor Deposition (CVD) growth process. Type IIa

PROPORTIONS



Sample Image Used

CLARITY CHARACTERISTICS



KEY TO SYMBOLS

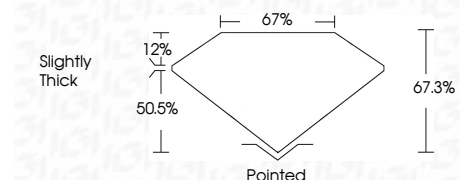
Red symbols indicate internal characteristics. Green symbols indicate external characteristics.

COLOR

D E F G H I J Faint Very Light Light

CLARITY

IF VS 1-2 VS 1-2 SI 1-2 I 1-3 Internally Flawless Very Very Slightly Included Very Slightly Included Slightly Included Included



ADDITIONAL GRADING INFORMATION

Polish EXCELLENT Symmetry EXCELLENT Fluorescence NONE Inscription(s) IGI LG666438216 Comments: This Laboratory Grown Diamond was created by Chemical Vapor Deposition (CVD) growth process. Type IIa



November 25, 2024 IGI Report No LG666438216 CUT CORNERED RECT. MODIFIED BRILLIANT 9.92 X 6.60 X 4.44 MM 2.53 CARATS G VS 2 67.3% 67% Slightly Thick Pointed EXCELLENT EXCELLENT NONE NONE IGI LG666438216

Comments: This Laboratory Grown Diamond was created by Chemical Vapor Deposition (CVD) growth process. Type IIa