



ELECTRONIC COPY

LG666440514
Report verification at igi.org



November 29, 2024
IGI Report Number **LG666440514**
Description **LABORATORY GROWN DIAMOND**
Shape and Cutting Style **ROUND BRILLIANT**
Measurements **11.17 - 11.21 X 6.56 MM**
GRADING RESULTS
Carat Weight **5.00 CARATS**
Color Grade **D**
Clarity Grade **INTERNALLY FLAWLESS**
Cut Grade **EXCELLENT**

November 29, 2024
IGI Report Number **LG666440514**
Description **LABORATORY GROWN DIAMOND**
Shape and Cutting Style **ROUND BRILLIANT**
Measurements **11.17 - 11.21 X 6.56 MM**

GRADING RESULTS

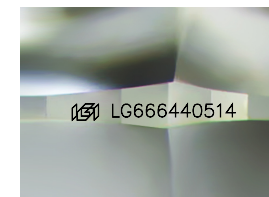
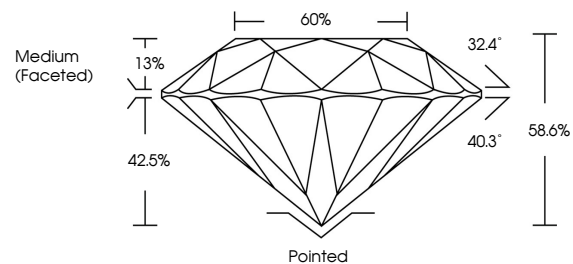
Carat Weight **5.00 CARATS**
Color Grade **D**
Clarity Grade **INTERNALLY FLAWLESS**
Cut Grade **EXCELLENT**

ADDITIONAL GRADING INFORMATION

Polish **EXCELLENT**
Symmetry **EXCELLENT**
Fluorescence **NONE**
Inscription(s) **LG666440514**

Comments: As Grown - No indication of post-growth treatment.
This Laboratory Grown Diamond was created by High Pressure High Temperature (HPHT) growth process.
Type II

PROPORTIONS



Sample Image Used

CLARITY CHARACTERISTICS



KEY TO SYMBOLS

Red symbols indicate internal characteristics.
Green symbols indicate external characteristics.

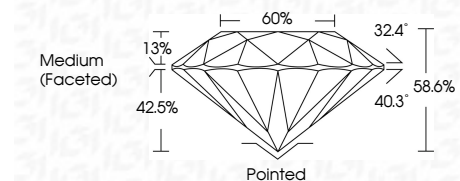
COLOR

D E F G H I J Faint Very Light Light

CLARITY

IF VS¹⁻² VS¹⁻² SI¹⁻² I¹⁻³

Internally Flawless Very Very Slightly Included Very Slightly Included Slightly Included Included



ADDITIONAL GRADING INFORMATION

Polish **EXCELLENT**
Symmetry **EXCELLENT**
Fluorescence **NONE**
Inscription(s) **LG666440514**
Comments: As Grown - No indication of post-growth treatment.
This Laboratory Grown Diamond was created by High Pressure High Temperature (HPHT) growth process.
Type II



IGI



November 29, 2024
IGI Report No **LG666440514**
ROUND BRILLIANT
11.17 - 11.21 X 6.56 MM
5.00 CARATS
D
Color Grade **EXCELLENT**
Clarity Grade **EXCELLENT**
Depth **58.6%**
Table **60%**
Medium (Faceted)
Culet **Pointed**
Polish **EXCELLENT**
Symmetry **EXCELLENT**
Fluorescence **NONE**
Inscriptions(s) **LG666440514**
Comments: As Grown - No indication of post-growth treatment.
This Laboratory Grown Diamond was created by High Pressure High Temperature (HPHT) growth process.
Type II