



**ELECTRONIC COPY**

LG667401261  
Report verification at igi.org



January 9, 2025  
IGI Report Number **LG667401261**  
Description **LABORATORY GROWN DIAMOND**  
Shape and Cutting Style **MODIFIED SQUARE EMERALD CUT**  
Measurements **7.15 X 6.87 X 4.37 MM**  
**GRADING RESULTS**  
Carat Weight **1.97 CARAT**  
Color Grade **D**  
Clarity Grade **VVS 1**

**LABORATORY GROWN DIAMOND REPORT**

January 9, 2025  
IGI Report Number **LG667401261**  
Description **LABORATORY GROWN DIAMOND**  
Shape and Cutting Style **MODIFIED SQUARE EMERALD CUT**  
Measurements **7.15 X 6.87 X 4.37 MM**

**GRADING RESULTS**

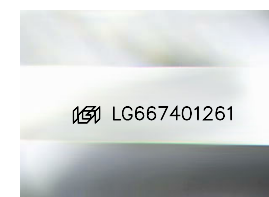
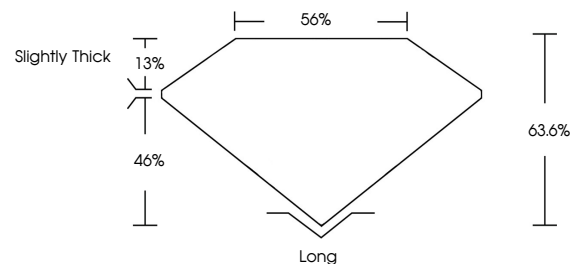
Carat Weight **1.97 CARAT**  
Color Grade **D**  
Clarity Grade **VVS 1**

**ADDITIONAL GRADING INFORMATION**

Polish **EXCELLENT**  
Symmetry **VERY GOOD**  
Fluorescence **NONE**  
Inscription(s) **IGI LG667401261**

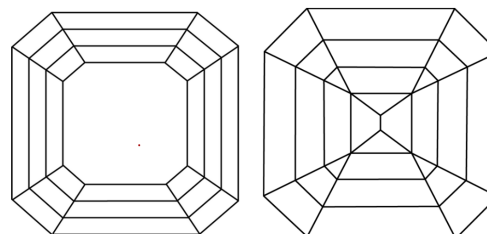
Comments: This Laboratory Grown Diamond was created by Chemical Vapor Deposition (CVD) growth process.  
Type IIa

**PROPORTIONS**



Sample Image Used

**CLARITY CHARACTERISTICS**



**KEY TO SYMBOLS**

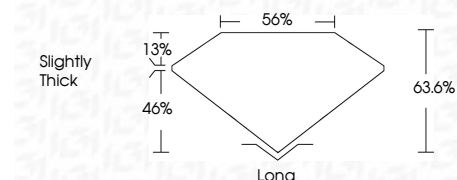
Red symbols indicate internal characteristics.  
Green symbols indicate external characteristics.

**COLOR**

D E F G H I J Faint Very Light Light

**CLARITY**

IF	VS <sup>1-2</sup>	VVS <sup>1-2</sup>	S <sup>1-2</sup>	I <sup>1-3</sup>
Internally Flawless	Very Very Slightly Included	Very Slightly Included	Slightly Included	Included



**ADDITIONAL GRADING INFORMATION**

Polish **EXCELLENT**  
Symmetry **VERY GOOD**  
Fluorescence **NONE**  
Inscription(s) **IGI LG667401261**  
Comments: This Laboratory Grown Diamond was created by Chemical Vapor Deposition (CVD) growth process.  
Type IIa



January 9, 2025  
IGI Report No LG667401261  
**MODIFIED SQUARE EMERALD CUT**  
7.15 X 6.87 X 4.37 MM  
1.97 CARAT  
D  
VVS 1  
63.6%  
46%  
13%  
Slightly Thick  
Long  
EXCELLENT  
VERY GOOD  
NONE  
IGI LG667401261  
Comments: This Laboratory Grown Diamond was created by Chemical Vapor Deposition (CVD) growth process.  
Type IIa