



ELECTRONIC COPY

LG667411527
Report verification at igi.org



November 29, 2024

IGI Report Number **LG667411527**

Description **LABORATORY GROWN DIAMOND**

Shape and Cutting Style **CUT CORNERED
RECTANGULAR MODIFIED
BRILLIANT**

Measurements **10.02 X 6.79 X 4.51 MM**

GRADING RESULTS

Carat Weight **2.58 CARATS**

Color Grade **F**

Clarity Grade **INTERNALLY FLAWLESS**

November 29, 2024

IGI Report Number **LG667411527**

Description **LABORATORY GROWN DIAMOND**

Shape and Cutting Style **CUT CORNERED RECTANGULAR
MODIFIED BRILLIANT**

Measurements **10.02 X 6.79 X 4.51 MM**

GRADING RESULTS

Carat Weight **2.58 CARATS**

Color Grade **F**

Clarity Grade **INTERNALLY FLAWLESS**

ADDITIONAL GRADING INFORMATION

Polish **EXCELLENT**

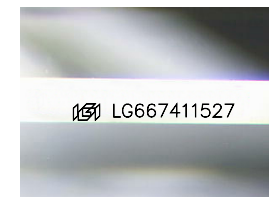
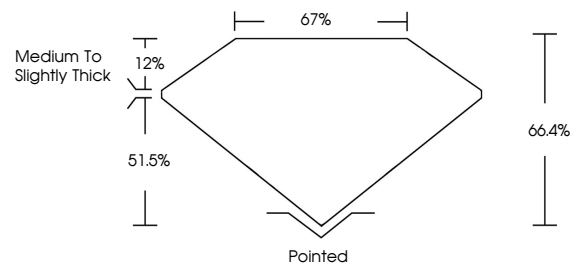
Symmetry **EXCELLENT**

Fluorescence **NONE**

Inscription(s) **IGI LG667411527**

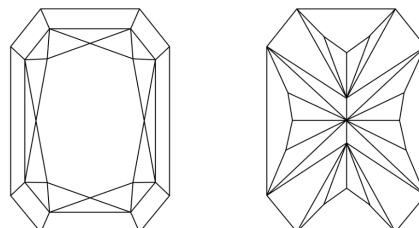
Comments: This Laboratory Grown Diamond was created by Chemical Vapor Deposition (CVD) growth process. Type IIa

PROPORTIONS



Sample Image Used

CLARITY CHARACTERISTICS



KEY TO SYMBOLS

Red symbols indicate internal characteristics.
Green symbols indicate external characteristics.

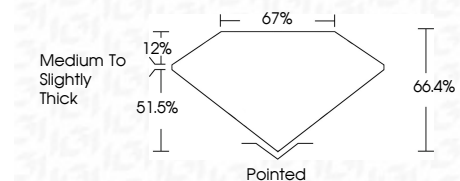
COLOR

D E F G H I J Faint Very Light Light

CLARITY

IF VS¹⁻² VS¹⁻² SI¹⁻² I¹⁻³

Internally Flawless Very Very Slightly Included Very Slightly Included Slightly Included Included



ADDITIONAL GRADING INFORMATION

Polish **EXCELLENT**

Symmetry **EXCELLENT**

Fluorescence **NONE**

Inscription(s) **IGI LG667411527**

Comments: This Laboratory Grown Diamond was created by Chemical Vapor Deposition (CVD) growth process. Type IIa



IGI



November 29, 2024
IGI Report No LG667411527
CUT CORNERED RECT. MODIFIED BRILLIANT
10.02 X 6.79 X 4.51 MM
Carat Weight 2.58 CARATS
Color Grade F
Clarity Grade IF
Depth 66.4%
Table 67%
Girdle Medium to Slightly Thick
Culet Pointed
Polish EXCELLENT
Symmetry EXCELLENT
Fluorescence NONE
Inscription(s) IGI LG667411527
Comments: This Laboratory Grown Diamond was created by Chemical Vapor Deposition (CVD) growth process. Type IIa