



ELECTRONIC COPY

LG667411710
Report verification at igi.org



November 27, 2024
IGI Report Number LG667411710
Description LABORATORY GROWN DIAMOND
Shape and Cutting Style CUT CORNERED RECTANGULAR MODIFIED BRILLIANT
Measurements 11.21 X 7.51 X 5.00 MM
GRADING RESULTS
Carat Weight 3.65 CARATS
Color Grade G
Clarity Grade VVS 2

November 27, 2024
IGI Report Number LG667411710
Description LABORATORY GROWN DIAMOND
Shape and Cutting Style CUT CORNERED RECTANGULAR MODIFIED BRILLIANT
Measurements 11.21 X 7.51 X 5.00 MM

GRADING RESULTS

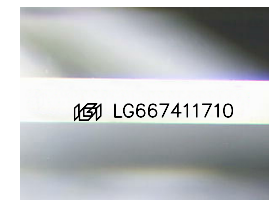
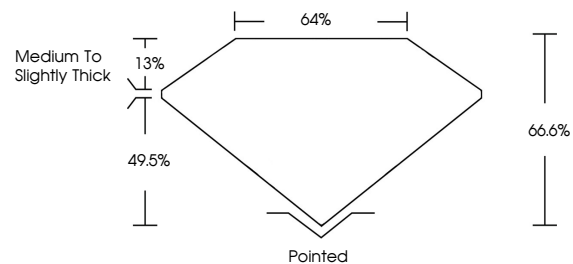
Carat Weight 3.65 CARATS
Color Grade G
Clarity Grade VVS 2

ADDITIONAL GRADING INFORMATION

Polish EXCELLENT
Symmetry EXCELLENT
Fluorescence NONE
Inscription(s) IGI LG667411710

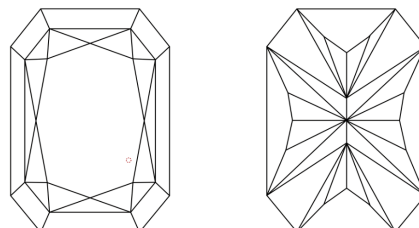
Comments: This Laboratory Grown Diamond was created by Chemical Vapor Deposition (CVD) growth process. Type IIa

PROPORTIONS



Sample Image Used

CLARITY CHARACTERISTICS



KEY TO SYMBOLS

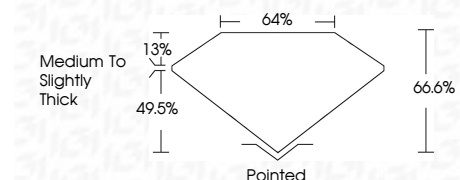
Red symbols indicate internal characteristics.
Green symbols indicate external characteristics.

COLOR

D E F G H I J Faint Very Light Light

CLARITY

IF VVS 1-2 VS 1-2 SI 1-2 I 1-3
Internally Flawless Very Very Slightly Included Very Slightly Included Slightly Included Included



ADDITIONAL GRADING INFORMATION

Polish EXCELLENT
Symmetry EXCELLENT
Fluorescence NONE
Inscription(s) IGI LG667411710
Comments: This Laboratory Grown Diamond was created by Chemical Vapor Deposition (CVD) growth process. Type IIa



November 27, 2024
IGI Report No LG667411710
CUT CORNERED RECT. MODIFIED BRILLIANT
3.65 CARATS G
11.21 X 7.51 X 5.00 MM
Carat Weight 3.65 CARATS
Color Grade G
Clarity Grade VVS 2
Depth 66.6%
Table 49.5%
Girdle Medium to Slightly Thick
Culet Pointed
Polish EXCELLENT
Symmetry EXCELLENT
Fluorescence NONE
Inscription(s) IGI LG667411710
Comments: This Laboratory Grown Diamond was created by Chemical Vapor Deposition (CVD) growth process. Type IIa