



ELECTRONIC COPY

LG667411780
Report verification at igi.org



November 30, 2024
IGI Report Number **LG667411780**
Description **LABORATORY GROWN DIAMOND**
Shape and Cutting Style **ROUND BRILLIANT**
Measurements **6.75 - 6.81 X 4.26 MM**
GRADING RESULTS
Carat Weight **1.23 CARAT**
Color Grade **D**
Clarity Grade **VS 1**
Cut Grade **EXCELLENT**

November 30, 2024
IGI Report Number **LG667411780**
Description **LABORATORY GROWN DIAMOND**
Shape and Cutting Style **ROUND BRILLIANT**
Measurements **6.75 - 6.81 X 4.26 MM**

GRADING RESULTS

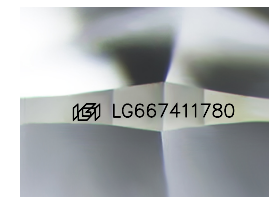
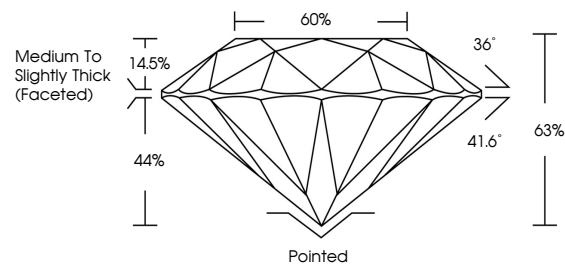
Carat Weight **1.23 CARAT**
Color Grade **D**
Clarity Grade **VS 1**
Cut Grade **EXCELLENT**

ADDITIONAL GRADING INFORMATION

Polish **EXCELLENT**
Symmetry **EXCELLENT**
Fluorescence **NONE**
Inscription(s) **IGI LG667411780**

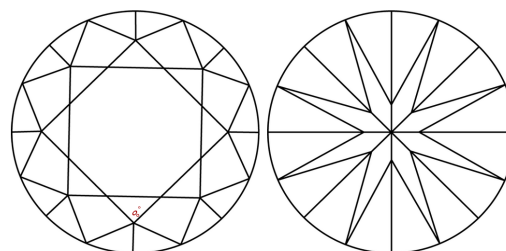
Comments: As Grown - No indication of post-growth treatment.
This Laboratory Grown Diamond was created by High Pressure High Temperature (HPHT) growth process.
Type II

PROPORTIONS



Sample Image Used

CLARITY CHARACTERISTICS



KEY TO SYMBOLS

Red symbols indicate internal characteristics.
Green symbols indicate external characteristics.

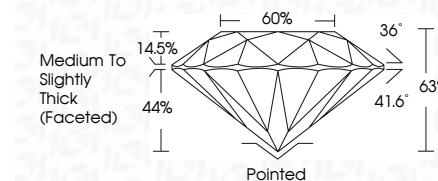
COLOR

D E F G H I J Faint Very Light Light

CLARITY

IF WS¹⁻² VS¹⁻² SI¹⁻² I¹⁻³

Internally Flawless Very Very Slightly Included Very Slightly Included Slightly Included Included



ADDITIONAL GRADING INFORMATION

Polish **EXCELLENT**
Symmetry **EXCELLENT**
Fluorescence **NONE**
Inscription(s) **IGI LG667411780**
Comments: As Grown - No indication of post-growth treatment.
This Laboratory Grown Diamond was created by High Pressure High Temperature (HPHT) growth process.
Type II



November 30, 2024
IGI Report No LG667411780
ROUND BRILLIANT
6.75 - 6.81 X 4.26 MM
1.23 CARAT
D
VS 1
EXCELLENT
63%
66%
Medium To Slightly Thick (Faceted)
Pointed
EXCELLENT
EXCELLENT
NONE
IGI LG667411780
Comments: As Grown - No indication of post-growth treatment.
This Laboratory Grown Diamond was created by High Pressure High Temperature (HPHT) growth process.
Type II