



**ELECTRONIC COPY**

LG667420559  
Report verification at [igi.org](http://igi.org)



November 29, 2024

IGI Report Number **LG667420559**

Description **LABORATORY GROWN DIAMOND**

Shape and Cutting Style **BAGUETTE**

Measurements **8.27 X 4.42 X 2.67 MM**

**GRADING RESULTS**

Carat Weight **1.03 CARAT**

Color Grade **E**

Clarity Grade **VVS 1**

November 29, 2024  
IGI Report Number **LG667420559**  
Description **LABORATORY GROWN DIAMOND**  
Shape and Cutting Style **BAGUETTE**  
Measurements **8.27 X 4.42 X 2.67 MM**

**GRADING RESULTS**

Carat Weight **1.03 CARAT**

Color Grade **E**

Clarity Grade **VVS 1**

**ADDITIONAL GRADING INFORMATION**

Polish **EXCELLENT**

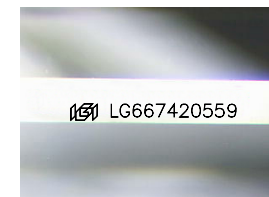
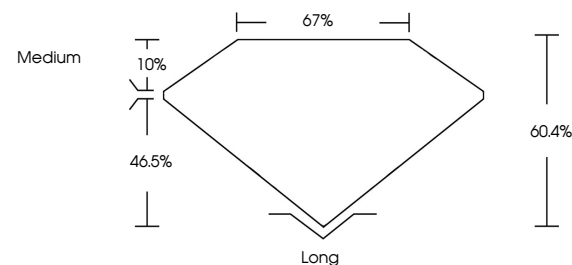
Symmetry **EXCELLENT**

Fluorescence **NONE**

Inscription(s) **IGI LG667420559**

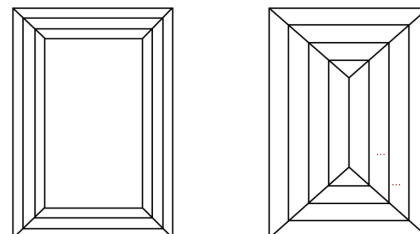
Comments: This Laboratory Grown Diamond was created by Chemical Vapor Deposition (CVD) growth process.  
Type IIa

**PROPORTIONS**



Sample Image Used

**CLARITY CHARACTERISTICS**



**KEY TO SYMBOLS**

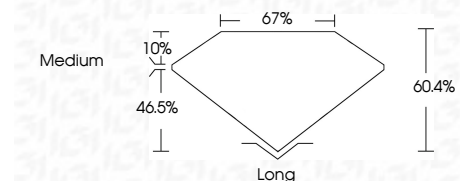
Red symbols indicate internal characteristics.  
Green symbols indicate external characteristics.

**COLOR**

D E F G H I J Faint Very Light Light

**CLARITY**

IF	VS <sup>1-2</sup>	VS <sup>1-2</sup>	SI <sup>1-2</sup>	I <sup>1-3</sup>
Internally Flawless	Very Very Slightly Included	Very Slightly Included	Slightly Included	Included



**ADDITIONAL GRADING INFORMATION**

Polish **EXCELLENT**

Symmetry **EXCELLENT**

Fluorescence **NONE**

Inscription(s) **IGI LG667420559**

Comments: This Laboratory Grown Diamond was created by Chemical Vapor Deposition (CVD) growth process.  
Type IIa



**IGI**



November 29, 2024  
IGI Report No **LG667420559**  
**BAGUETTE**  
1.03 CARAT **E**  
8.27 X 4.42 X 2.67 MM  
Carat Weight **VVS 1**  
Color Grade **60.4%**  
Clarity Grade **67%**  
Depth **Medium**  
Table **Long**  
Girdle **EXCELLENT**  
Culet **EXCELLENT**  
Polish **EXCELLENT**  
Symmetry **NONE**  
Fluorescence **NONE**  
Inscription(s) **IGI LG667420559**  
Comments: This Laboratory Grown Diamond was created by Chemical Vapor Deposition (CVD) growth process.  
Type IIa