

ELECTRONIC COPY

LABORATORY GROWN DIAMOND REPORT

November 29, 2024	
IGI Report Number	LG667424692
Description	LABORATORY GROWN DIAMOND
Shape and Cutting Style	CUT CORNERED RECTANGULAR MODIFIED BRILLIANT
Measurements	13.56 X 8.74 X 5.46 MM

GRADING RESULTS

Carat Weight	5.74 CARATS
Color Grade	E
Clarity Grade	VVS 1

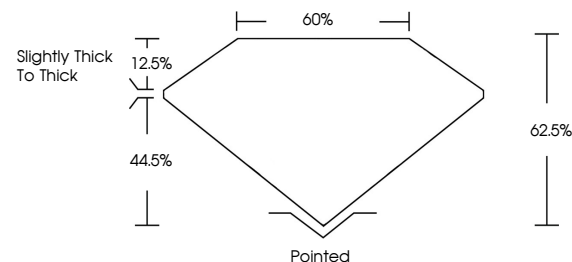
ADDITIONAL GRADING INFORMATION

Polish	EXCELLENT
Symmetry	EXCELLENT
Fluorescence	NONE
Inscription(s)	15 LG667424692

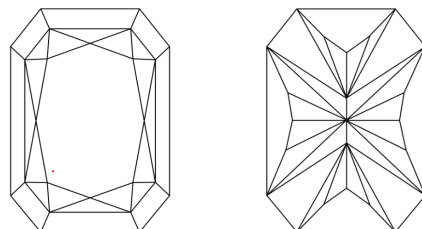
Comments: This Laboratory Grown Diamond was created by Chemical Vapor Deposition (CVD) growth process.
Type IIa

LG667424692
Report verification at lgi.org

PROPORTIONS

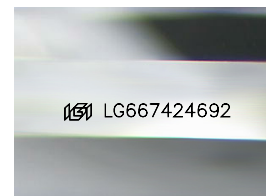


CLARITY CHARACTERISTICS



KEY TO SYMBOLS

Red symbols indicate internal characteristics.
Green symbols indicate external characteristics.



Sample Image Used

COLOR

D E F G H I J Faint Very Light Light

CLARITY

IF	VS ¹⁻²	VS ¹⁻²	SI ¹⁻²	I ¹⁻³
Internally Flawless	Very Very Slightly Included	Very Slightly Included	Slightly Included	Included

LABORATORY GROWN DIAMOND REPORT

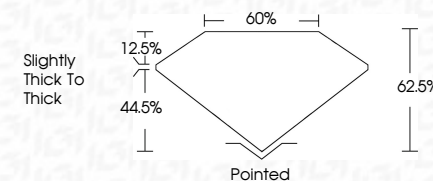


November 29, 2024	
IGI Report Number	LG667424692
Description	LABORATORY GROWN DIAMOND
Shape and Cutting Style	CUT CORNERED RECTANGULAR MODIFIED BRILLIANT

Measurements **13.56 X 8.74 X 5.46 MM**

GRADING RESULTS

Carat Weight	5.74 CARATS
Color Grade	E
Clarity Grade	VVS 1



ADDITIONAL GRADING INFORMATION

Polish	EXCELLENT
Symmetry	EXCELLENT
Fluorescence	NONE
Inscription(s)	163 LG667424692
Comments: This Laboratory Grown Diamond was created by Chemical Vapor Deposition (CVD) growth process.	
Type IIa	



© IGI 2020, International Gemological Institute

FD - 10 20

November 29, 2024	5.74 CARATS	E	VVS 1	62.5%	Slightly thick to thick	Pointed	NONE	IGI LG567424692
Lab Report No. LG567424692			62.5%	60%		Excellent		
CU REPORTED RECT. MODIFIED BRILLIANT						Excellent		
						Excellent		
13.65 x 8.74 x 5.46 MM								
	Carat Weight	Color Grade	Clarity Grade	Depth	Table	Culet	Symmetry	Fluorescence
								inscriptions(s)
						Polish		

Comments:
 The Laboratory Grown Diamond was
 produced by the Chemical Vapor Deposition
 (CVD) growth process.
 type IIG