



ELECTRONIC COPY

LG667434755
Report verification at igi.org



November 30, 2024

IGI Report Number **LG667434755**

Description **LABORATORY GROWN DIAMOND**

Shape and Cutting Style **PRINCESS CUT**

Measurements **7.18 X 7.13 X 5.05 MM**

GRADING RESULTS

Carat Weight **2.29 CARATS**

Color Grade **E**

Clarity Grade **VVS 2**

LABORATORY GROWN DIAMOND REPORT

November 30, 2024

IGI Report Number **LG667434755**

Description **LABORATORY GROWN DIAMOND**

Shape and Cutting Style **PRINCESS CUT**

Measurements **7.18 X 7.13 X 5.05 MM**

GRADING RESULTS

Carat Weight **2.29 CARATS**

Color Grade **E**

Clarity Grade **VVS 2**

ADDITIONAL GRADING INFORMATION

Polish **EXCELLENT**

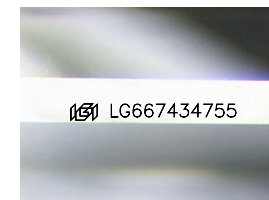
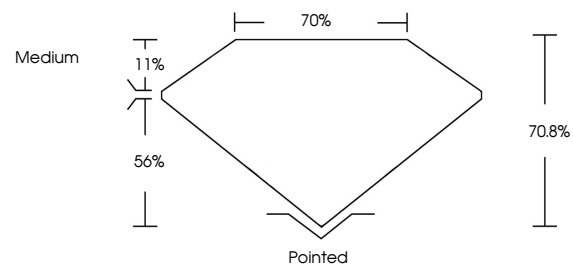
Symmetry **EXCELLENT**

Fluorescence **NONE**

Inscription(s) **LG667434755**

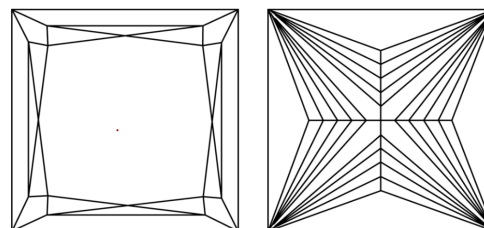
Comments: This Laboratory Grown Diamond was created by Chemical Vapor Deposition (CVD) growth process. Type IIa

PROPORTIONS



Sample Image Used

CLARITY CHARACTERISTICS



KEY TO SYMBOLS

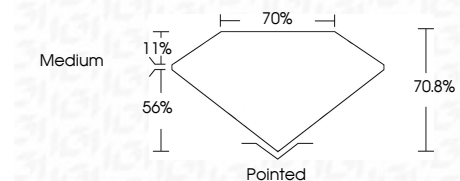
Red symbols indicate internal characteristics.
Green symbols indicate external characteristics.

COLOR

D E F G H I J Faint Very Light Light

CLARITY

| IF | VS ¹⁻² | VS ¹⁻² | SI ¹⁻² | I ¹⁻³ |
|---------------------|-----------------------------|------------------------|-------------------|------------------|
| Internally Flawless | Very Very Slightly Included | Very Slightly Included | Slightly Included | Included |



ADDITIONAL GRADING INFORMATION

Polish **EXCELLENT**

Symmetry **EXCELLENT**

Fluorescence **NONE**

Inscription(s) **LG667434755**

Comments: This Laboratory Grown Diamond was created by Chemical Vapor Deposition (CVD) growth process. Type IIa



IGI



| | | | | | | |
|---------------------------|---------------|----------|--------------|----------------|--------|-----------|
| November 30, 2024 | 2.29 CARATS | E | 70.8% | 70% | Medium | Pointed |
| IGI Report No LG667434755 | PRINCESS CUT | VVS 2 | EXCELLENT | EXCELLENT | NONE | EXCELLENT |
| 7.18 X 7.13 X 5.05 MM | Color Grade | Depth | Table | Girdle | Culet | Polish |
| | Clarity Grade | Symmetry | Fluorescence | Inscription(s) | | |
| | | | | | | |

Comments: This Laboratory Grown Diamond was created by Chemical Vapor Deposition (CVD) growth process. Type IIa