



**ELECTRONIC COPY**

LG667435636  
Report verification at [igi.org](http://igi.org)



November 29, 2024

IGI Report Number **LG667435636**

Description **LABORATORY GROWN DIAMOND**

Shape and Cutting Style **PRINCESS CUT**

Measurements **9.70 X 9.65 X 6.81 MM**

**GRADING RESULTS**

Carat Weight **5.57 CARATS**

Color Grade **E**

Clarity Grade **VS 1**

**LABORATORY GROWN DIAMOND REPORT**

November 29, 2024

IGI Report Number **LG667435636**

Description **LABORATORY GROWN DIAMOND**

Shape and Cutting Style **PRINCESS CUT**

Measurements **9.70 X 9.65 X 6.81 MM**

**GRADING RESULTS**

Carat Weight **5.57 CARATS**

Color Grade **E**

Clarity Grade **VS 1**

**ADDITIONAL GRADING INFORMATION**

Polish **EXCELLENT**

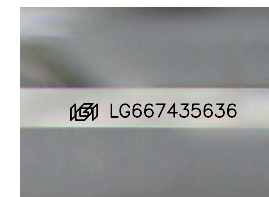
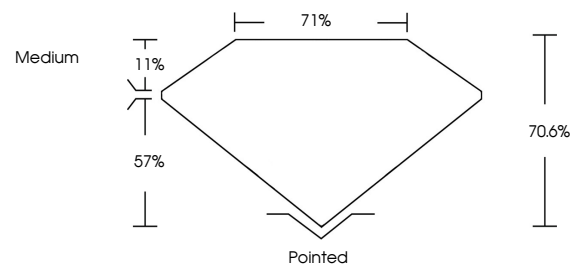
Symmetry **EXCELLENT**

Fluorescence **NONE**

Inscription(s) **LG667435636**

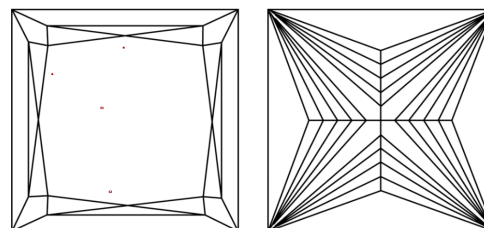
Comments: This Laboratory Grown Diamond was created by Chemical Vapor Deposition (CVD) growth process.  
Type IIa

**PROPORTIONS**



Sample Image Used

**CLARITY CHARACTERISTICS**



**KEY TO SYMBOLS**

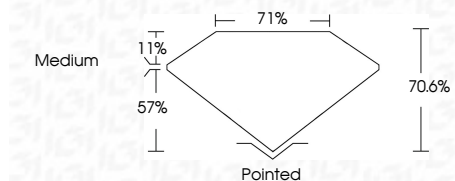
Red symbols indicate internal characteristics.  
Green symbols indicate external characteristics.

**COLOR**

D E F G H I J Faint Very Light Light

**CLARITY**

IF	VS <sup>1-2</sup>	VS <sup>1-2</sup>	SI <sup>1-2</sup>	I <sup>1-3</sup>
Internally Flawless	Very Very Slightly Included	Very Slightly Included	Slightly Included	Included



**ADDITIONAL GRADING INFORMATION**

Polish **EXCELLENT**

Symmetry **EXCELLENT**

Fluorescence **NONE**

Inscription(s) **LG667435636**

Comments: This Laboratory Grown Diamond was created by Chemical Vapor Deposition (CVD) growth process.  
Type IIa



November 29, 2024	<b>5.57 CARATS</b>	<b>E</b>	<b>VS 1</b>	<b>70.6%</b>	<b>71%</b>	<b>Medium</b>	<b>Pointed</b>
IGI Report No LG667435636	<b>PRINCESS CUT</b>						<b>EXCELLENT</b>
<b>9.70 X 9.65 X 6.81 MM</b>	Carat Weight	Color Grade	Clarity Grade	Depth	Table	Girdle	Culet
							Polish
							Symmetry
							Fluorescence
							Inscription(s)
							LG667435636

Comments: This Laboratory Grown Diamond was created by Chemical Vapor Deposition (CVD) growth process.  
Type IIa