



ELECTRONIC COPY

LG667452060
Report verification at igi.org



December 3, 2024

IGI Report Number **LG667452060**

Description **LABORATORY GROWN DIAMOND**

Shape and Cutting Style **PRINCESS CUT**

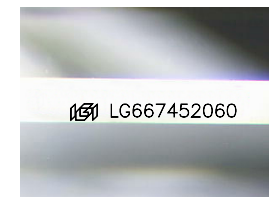
Measurements **8.14 X 7.71 X 5.33 MM**

GRADING RESULTS

Carat Weight **3.00 CARATS**

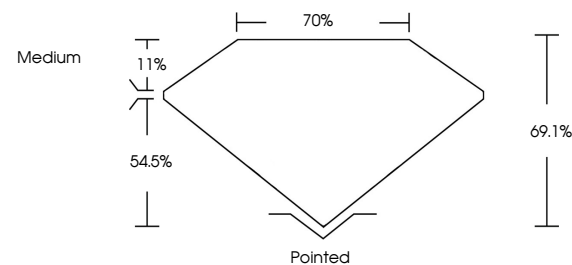
Color Grade **G**

Clarity Grade **VS 2**

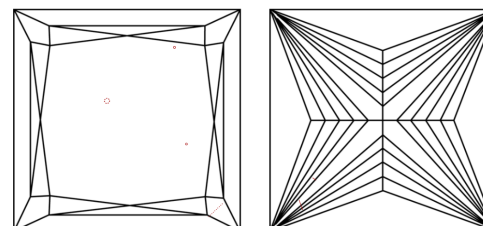


Sample Image Used

PROPORTIONS



CLARITY CHARACTERISTICS



KEY TO SYMBOLS

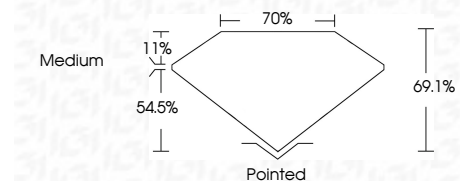
Red symbols indicate internal characteristics.
Green symbols indicate external characteristics.

COLOR

D E F G H I J Faint Very Light Light

CLARITY

IF	VS ¹⁻²	VS ¹⁻²	SI ¹⁻²	I ¹⁻³
Internally Flawless	Very Very Slightly Included	Very Slightly Included	Slightly Included	Included



ADDITIONAL GRADING INFORMATION

Polish **EXCELLENT**

Symmetry **EXCELLENT**

Fluorescence **NONE**

Inscription(s) **IGI LG667452060**

Comments: This Laboratory Grown Diamond was created by Chemical Vapor Deposition (CVD) growth process. Type IIa



IGI



December 3, 2024
IGI Report No LG667452060
PRINCESS CUT

3.00 CARATS
G

8.14 X 7.71 X 5.33 MM
Color Grade VS 2
Depth 54.5%
Table 11%
Girdle Medium

Pointed
EXCELLENT
EXCELLENT
NONE
IGI LG667452060

Comments: This Laboratory Grown Diamond was created by Chemical Vapor Deposition (CVD) growth process. Type IIa