



ELECTRONIC COPY

LG667456089
Report verification at igi.org



December 2, 2024
IGI Report Number **LG667456089**
Description **LABORATORY GROWN DIAMOND**
Shape and Cutting Style **OVAL BRILLIANT**
Measurements **19.87 X 12.57 X 6.67 MM**
GRADING RESULTS
Carat Weight **10.23 CARATS**
Color Grade **E**
Clarity Grade **VVS 2**

December 2, 2024
IGI Report Number **LG667456089**
Description **LABORATORY GROWN DIAMOND**
Shape and Cutting Style **OVAL BRILLIANT**
Measurements **19.87 X 12.57 X 6.67 MM**

GRADING RESULTS

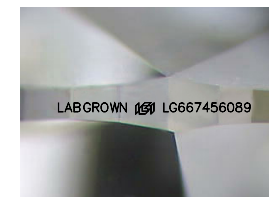
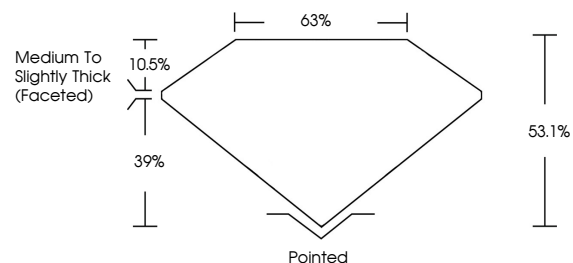
Carat Weight **10.23 CARATS**
Color Grade **E**
Clarity Grade **VVS 2**

ADDITIONAL GRADING INFORMATION

Polish **EXCELLENT**
Symmetry **EXCELLENT**
Fluorescence **NONE**
Inscription(s) **LABGROWN (IGI) LG667456089**

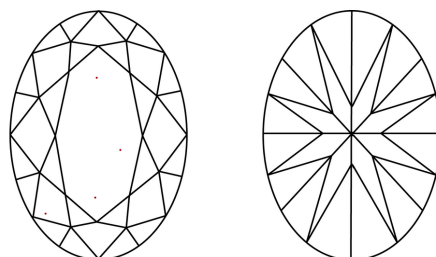
Comments: This Laboratory Grown Diamond was created by Chemical Vapor Deposition (CVD) growth process.
Type IIa

PROPORTIONS



Sample Image Used

CLARITY CHARACTERISTICS



KEY TO SYMBOLS

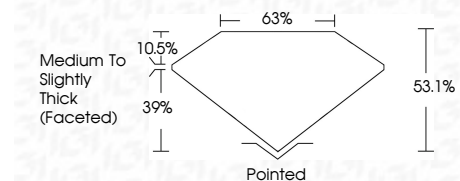
Red symbols indicate internal characteristics.
Green symbols indicate external characteristics.

COLOR

D E F G H I J Faint Very Light Light

CLARITY

IF	VS ¹⁻²	VS ¹⁻²	SI ¹⁻²	I ¹⁻³
Internally Flawless	Very Very Slightly Included	Very Slightly Included	Slightly Included	Included



ADDITIONAL GRADING INFORMATION

Polish **EXCELLENT**
Symmetry **EXCELLENT**
Fluorescence **NONE**
Inscription(s) **LABGROWN (IGI) LG667456089**
Comments: This Laboratory Grown Diamond was created by Chemical Vapor Deposition (CVD) growth process.
Type IIa



December 2, 2024
IGI Report No. **LG667456089**
OVAL BRILLIANT
19.87 X 12.57 X 6.67 MM
10.23 CARATS
E
VS 2
63.1%
39%
Medium to Slightly Thick (Faceted)
Pointed
EXCELLENT
EXCELLENT
NONE
LABGROWN (IGI) LG667456089
Comments: This Laboratory Grown Diamond was created by Chemical Vapor Deposition (CVD) growth process.
Type IIa