



ELECTRONIC COPY

LG668402657
Report verification at igi.org



December 4, 2024

IGI Report Number **LG668402657**

Description **LABORATORY GROWN DIAMOND**

Shape and Cutting Style **PRINCESS CUT**

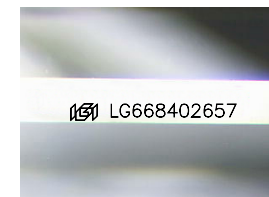
Measurements **7.61 X 7.46 X 5.10 MM**

GRADING RESULTS

Carat Weight **2.58 CARATS**

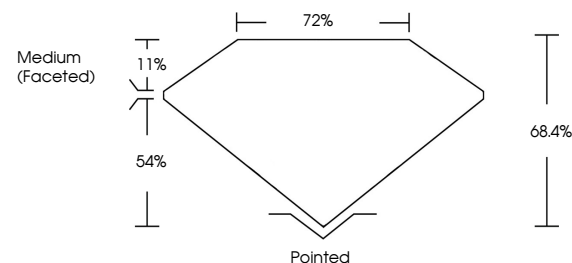
Color Grade **D**

Clarity Grade **VVS 2**

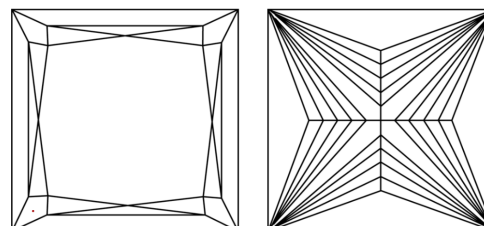


Sample Image Used

PROPORTIONS



CLARITY CHARACTERISTICS



KEY TO SYMBOLS

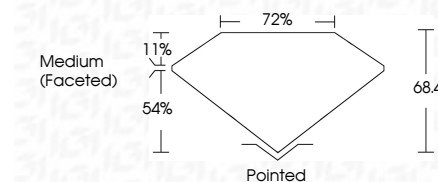
Red symbols indicate internal characteristics.
Green symbols indicate external characteristics.

COLOR

D E F G H I J Faint Very Light Light

CLARITY

IF	VS ¹⁻²	VS ¹⁻²	SI ¹⁻²	I ¹⁻³
Internally Flawless	Very Very Slightly Included	Very Slightly Included	Slightly Included	Included



ADDITIONAL GRADING INFORMATION

Polish **EXCELLENT**

Symmetry **EXCELLENT**

Fluorescence **NONE**

Inscription(s) **IGI LG668402657**

Comments: This Laboratory Grown Diamond was created by Chemical Vapor Deposition (CVD) growth process. Type IIa



IGI



December 4, 2024
IGI Report No. LG668402657
PRINCESS CUT

7.61 X 7.46 X 5.10 MM

2.58 CARATS
D

Carat Weight
Color Grade
Depth
Table
Girdle
Medium (Faceted)

VVS 2
68.4%
72%

Pointed
EXCELLENT
EXCELLENT
NONE
IGI LG668402657

Culet
Polish
Symmetry
Fluorescence
Inscription(s)

Comments: This Laboratory Grown Diamond was created by Chemical Vapor Deposition (CVD) growth process. Type IIa