



**ELECTRONIC COPY**

LG668404394  
Report verification at igi.org



December 3, 2024

IGI Report Number **LG668404394**

Description **LABORATORY GROWN DIAMOND**

Shape and Cutting Style **OVAL BRILLIANT**

Measurements **10.19 X 6.52 X 3.89 MM**

**GRADING RESULTS**

Carat Weight **1.60 CARAT**

Color Grade **D**

Clarity Grade **VS 1**

December 3, 2024  
IGI Report Number **LG668404394**  
Description **LABORATORY GROWN DIAMOND**  
Shape and Cutting Style **OVAL BRILLIANT**  
Measurements **10.19 X 6.52 X 3.89 MM**

**GRADING RESULTS**

Carat Weight **1.60 CARAT**

Color Grade **D**

Clarity Grade **VS 1**

**ADDITIONAL GRADING INFORMATION**

Polish **EXCELLENT**

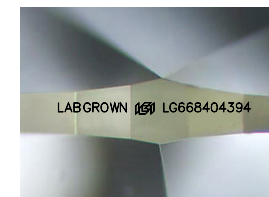
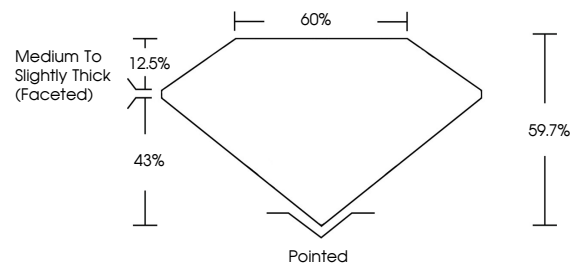
Symmetry **EXCELLENT**

Fluorescence **NONE**

Inscription(s) **LABGROWN (IGI) LG668404394**

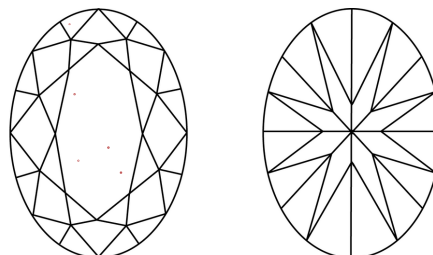
Comments: This Laboratory Grown Diamond was created by Chemical Vapor Deposition (CVD) growth process.  
Type IIa

**PROPORTIONS**



Sample Image Used

**CLARITY CHARACTERISTICS**



**KEY TO SYMBOLS**

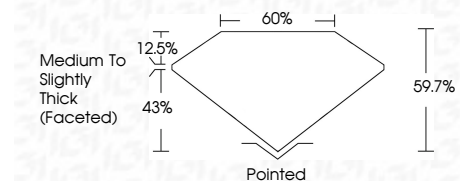
Red symbols indicate internal characteristics.  
Green symbols indicate external characteristics.

**COLOR**

D E F G H I J Faint Very Light Light

**CLARITY**

IF	VS <sup>1-2</sup>	VS <sup>1-2</sup>	SI <sup>1-2</sup>	I <sup>1-3</sup>
Internally Flawless	Very Very Slightly Included	Very Slightly Included	Slightly Included	Included



**ADDITIONAL GRADING INFORMATION**

Polish **EXCELLENT**

Symmetry **EXCELLENT**

Fluorescence **NONE**

Inscription(s) **LABGROWN (IGI) LG668404394**

Comments: This Laboratory Grown Diamond was created by Chemical Vapor Deposition (CVD) growth process.  
Type IIa



**IGI**



December 3, 2024  
IGI Report No. **LG668404394**  
**OVAL BRILLIANT**  
1.60 CARAT  
D  
Carat Weight  
Color Grade  
Clarity Grade  
Depth  
Table  
Girdle  
Medium to Slightly Thick (Faceted)  
Pointed  
EXCELLENT  
EXCELLENT  
NONE  
LABGROWN (IGI) LG668404394

Comments: This Laboratory Grown Diamond was created by Chemical Vapor Deposition (CVD) growth process.  
Type IIa