



ELECTRONIC COPY

LG668404503
Report verification at igi.org



December 7, 2024
IGI Report Number **LG668404503**
Description **LABORATORY GROWN DIAMOND**
Shape and Cutting Style **CUT CORNERED
RECTANGULAR MODIFIED
BRILLIANT**
Measurements **8.24 X 5.55 X 4.10 MM**
GRADING RESULTS
Carat Weight **1.91 CARAT**
Color Grade **FANCY VIVID YELLOW**
Clarity Grade **VS 2**

December 7, 2024
IGI Report Number **LG668404503**
Description **LABORATORY GROWN DIAMOND**
Shape and Cutting Style **CUT CORNERED RECTANGULAR
MODIFIED BRILLIANT**
Measurements **8.24 X 5.55 X 4.10 MM**

GRADING RESULTS

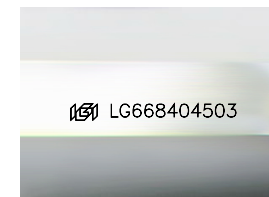
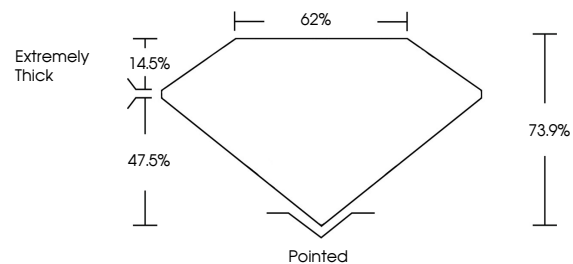
Carat Weight **1.91 CARAT**
Color Grade **FANCY VIVID YELLOW**
Clarity Grade **VS 2**

ADDITIONAL GRADING INFORMATION

Polish **EXCELLENT**
Symmetry **EXCELLENT**
Fluorescence **NONE**
Inscription(s) **IGI LG668404503**

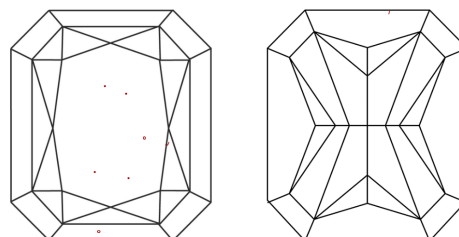
Comments: This Laboratory Grown Diamond was created by Chemical Vapor Deposition (CVD) growth process.

PROPORTIONS



Sample Image Used

CLARITY CHARACTERISTICS



KEY TO SYMBOLS

Red symbols indicate internal characteristics.
Green symbols indicate external characteristics.

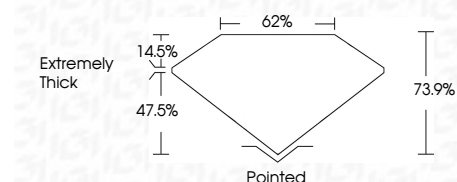
COLOR

D E F G H I J Faint Very Light Light

CLARITY

IF VS¹⁻² VS¹⁻² SI¹⁻² I¹⁻³

Internally Flawless Very Very Slightly Included Very Slightly Included Slightly Included Included



ADDITIONAL GRADING INFORMATION

Polish **EXCELLENT**
Symmetry **EXCELLENT**
Fluorescence **NONE**
Inscription(s) **IGI LG668404503**
Comments: This Laboratory Grown Diamond was created by Chemical Vapor Deposition (CVD) growth process.



IGI



December 7, 2024
IGI Report No **LG668404503**
CUT CORNERED RECT. MODIFIED BRILLIANT
8.24 X 5.55 X 4.10 MM
Carat Weight **1.91 CARAT**
Color Grade **FANCY VIVID YELLOW**
Clarity Grade **VS 2**
Depth **73.9%**
Table **62%**
Girdle **Extremely Thick**
Culet **Pointed**
Polish **EXCELLENT**
Symmetry **EXCELLENT**
Fluorescence **NONE**
Inscription(s) **IGI LG668404503**
Comments: This Laboratory Grown Diamond was created by Chemical Vapor Deposition (CVD) growth process.