



ELECTRONIC COPY

LG668407018  
Report verification at igi.org



December 19, 2024  
IGI Report Number **LG668407018**  
Description **LABORATORY GROWN DIAMOND**  
Shape and Cutting Style **SQUARE CUSHION MODIFIED BRILLIANT**  
Measurements **9.91 X 9.65 X 6.23 MM**  
**GRADING RESULTS**  
Carat Weight **5.12 CARATS**  
Color Grade **FANCY INTENSE PINK**  
Clarity Grade **SI 1**

LABORATORY GROWN DIAMOND REPORT

December 19, 2024  
IGI Report Number **LG668407018**  
Description **LABORATORY GROWN DIAMOND**  
Shape and Cutting Style **SQUARE CUSHION MODIFIED BRILLIANT**  
Measurements **9.91 X 9.65 X 6.23 MM**

GRADING RESULTS

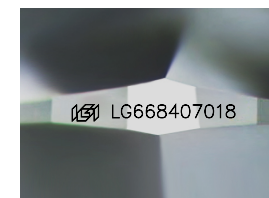
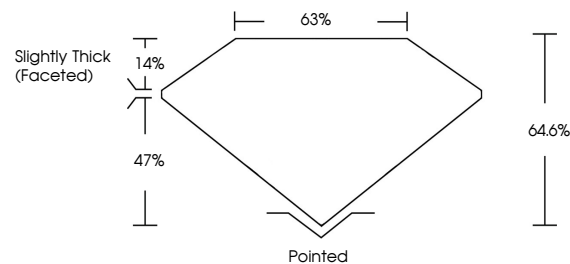
Carat Weight **5.12 CARATS**  
Color Grade **FANCY INTENSE PINK**  
Clarity Grade **SI 1**

ADDITIONAL GRADING INFORMATION

Polish **EXCELLENT**  
Symmetry **EXCELLENT**  
Fluorescence **STRONG**  
Inscription(s) **IGI LG668407018**

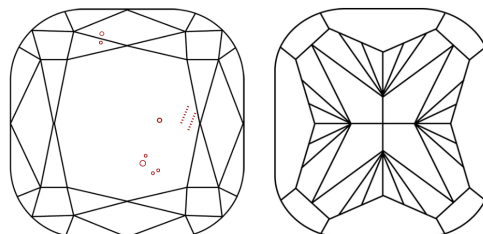
Comments: This Laboratory Grown Diamond was created by Chemical Vapor Deposition (CVD) growth process. Indications of post-growth treatment.

PROPORTIONS



Sample Image Used

CLARITY CHARACTERISTICS



KEY TO SYMBOLS

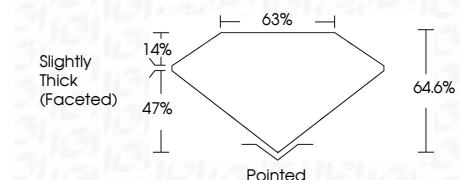
Red symbols indicate internal characteristics.  
Green symbols indicate external characteristics.

COLOR

D E F G H I J Faint Very Light Light

CLARITY

IF VS<sup>1-2</sup> VS<sup>1-2</sup> SI<sup>1-2</sup> I<sup>1-3</sup>  
Internally Flawless Very Very Slightly Included Very Slightly Included Slightly Included Included



ADDITIONAL GRADING INFORMATION

Polish **EXCELLENT**  
Symmetry **EXCELLENT**  
Fluorescence **STRONG**  
Inscription(s) **IGI LG668407018**  
Comments: This Laboratory Grown Diamond was created by Chemical Vapor Deposition (CVD) growth process. Indications of post-growth treatment.



December 19, 2024  
IGI Report No **LG668407018**  
**SQUARE CUSHION MODIFIED BRILLIANT**  
9.91 X 9.65 X 6.23 MM  
5.12 CARATS  
FANCY INTENSE PINK  
SI 1  
64.6%  
63%  
Slightly Thick (Faceted)  
Pointed  
EXCELLENT  
EXCELLENT  
STRONG  
IGI LG668407018  
Comments: This Laboratory Grown Diamond was created by Chemical Vapor Deposition (CVD) growth process. Indications of post-growth treatment.