



ELECTRONIC COPY

LABORATORY GROWN DIAMOND REPORT

December 9, 2024	
IGI Report Number	LG668428015
Description	LABORATORY GROWN DIAMOND
Shape and Cutting Style	EMERALD CUT
Measurements	10.48 X 7.72 X 5.17 MM

GRADING RESULTS

Carat Weight	4.09 CARATS
Color Grade	G
Clarity Grade	VS 2

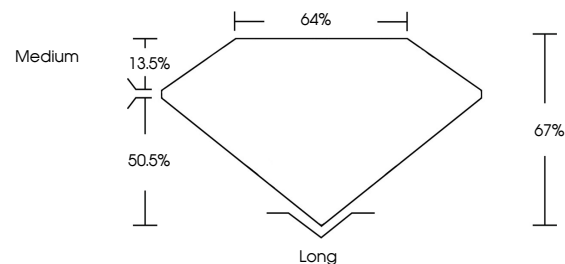
ADDITIONAL GRADING INFORMATION

Polish	EXCELLENT
Symmetry	EXCELLENT
Fluorescence	NONE
Inscription(s)	 LG668428015

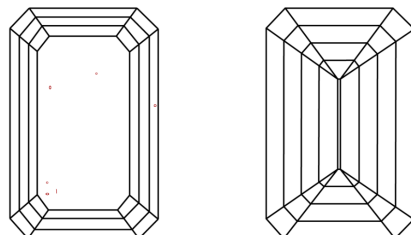
Comments: This Laboratory Grown Diamond was created by Chemical Vapor Deposition (CVD) growth process.
Type IIa

LG668428015
Report verification at lgi.org

PROPORTIONS

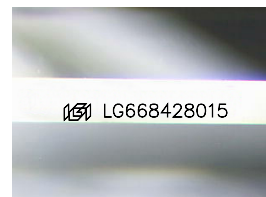


CLARITY CHARACTERISTICS



KEY TO SYMBOLS

Red symbols indicate internal characteristics.
Green symbols indicate external characteristics.



Sample Image Used

COLOR

D E F G H I J Faint Very Light Light

CLARITY

IF	VS ¹⁻²	VS ¹⁻²	SI ¹⁻²	I ¹⁻³
Internally Flawless	Very Very Slightly Included	Very Slightly Included	Slightly Included	Included

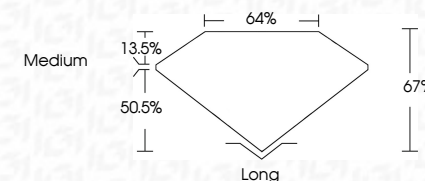
LABORATORY GROWN DIAMOND REPORT




December 9, 2024	
IGI Report Number	LG668428015
Description	LABORATORY GROWN DIAMOND
Shape and Cutting Style	EMERALD CUT
Measurements	10.48 X 7.72 X 5.17 MM

GRADING RESULTS

Carat Weight	4.09 CARATS
Color Grade	G
Clarity Grade	VS 2



ADDITIONAL GRADING INFORMATION

Polish	EXCELLENT
Symmetry	EXCELLENT
Fluorescence	NONE
Inscription(s)	 LG668428015
Comments: This Laboratory Grown Diamond was created by Chemical Vapor Deposition (CVD) growth process.	
Type IIa	



© IGI 2020, International Gemological Institute

FD - 10 20



THIS DOCUMENT WAS PRODUCED WITH THE FOLLOWING SECURITY MEASURES: SPECIAL DOCUMENT PAPER, INK SCREENS, WATERMARK, BACKGROUND DESIGNS, HOLOGRAM AND OTHER SECURITY FEATURES NOT LISTED AND DO EXCEED DOCUMENT SECURITY INDUSTRY GUIDELINES

www.igi.org



December 9, 2024
 IGI Report No LG668428015
 EVERALD CIT

10.48 X 7.72 X 5.17 MM	Carat Weight	4.09 CARATS
	Color Grade	G
	Clarity Grade	VS 2
	Depth	67%
	Table	64%
	Girdle	Medium
	Culet	Long
	Polish	EXCELLENT
	Symmetry	EXCELLENT
	Fluorescence	NONE
	Comments (optional)	see ICA49492015

Comments:
This Laboratory Grown Diamond was
created by Chemical Vapor Deposition
(CVD) growth process.