



**INTERNATIONAL
GEMOLOGICAL
INSTITUTE**

ELECTRONIC COPY

LG668437212

LABORATORY GROWN DIAMOND REPORT

December 5, 2024
 IGI Report Number **LG668437212**
 Description **LABORATORY GROWN DIAMOND**
 Shape and Cutting Style **SQUARE CUSHION CUT**
 Measurements **5.50 X 5.48 X 3.64 MM**

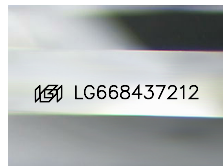
GRADING RESULTS

Carat Weight **0.84 CARAT**
 Color Grade **D**
 Clarity Grade **VS 1**

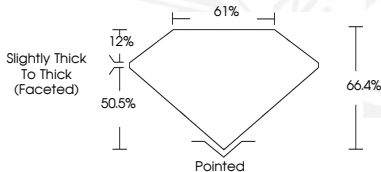
ADDITIONAL GRADING INFORMATION

Polish **EXCELLENT**
 Symmetry **EXCELLENT**
 Fluorescence **NONE**
 Inscription(s) **IGI LG668437212**

Comments: As Grown - No indication of post-growth treatment. This Laboratory Grown Diamond was created by High Pressure High Temperature (HPHT) growth process. Type II



Sample Image Used



December 5, 2024
IGI Report Number LG668437212
SQUARE CUSHION CUT
LABORATORY GROWN DIAMOND
5.50 X 5.48 X 3.64 MM
 Carat Weight **0.84 CARAT**
 Color Grade **D**
 Clarity Grade **VS 1**
 Polish **EXCELLENT**
 Symmetry **EXCELLENT**
 Fluorescence **NONE**
 Inscription(s) **IGI LG668437212**

Comments: As Grown - No indication of post-growth treatment. This Laboratory Grown Diamond was created by High Pressure High Temperature (HPHT) growth process. Type II



December 5, 2024
IGI Report Number LG668437212
SQUARE CUSHION CUT
LABORATORY GROWN DIAMOND
5.50 X 5.48 X 3.64 MM
 Carat Weight **0.84 CARAT**
 Color Grade **D**
 Clarity Grade **VS 1**
 Polish **EXCELLENT**
 Symmetry **EXCELLENT**
 Fluorescence **NONE**
 Inscription(s) **IGI LG668437212**

Comments: As Grown - No indication of post-growth treatment. This Laboratory Grown Diamond was created by High Pressure High Temperature (HPHT) growth process. Type II

THIS DOCUMENT WAS PRODUCED WITH THE FOLLOWING SECURITY MEASURES: SPECIAL DOCUMENT PAPER, INK SCREENS, WATERMARK, BACKGROUND DESIGNS, HOLOGRAM AND OTHER SECURITY FEATURES NOT LISTED AND DO EXCEED DOCUMENT SECURITY INDUSTRY GUIDELINES.

For terms & conditions and to verify this report, please visit www.igi.org