



ELECTRONIC COPY

LABORATORY GROWN DIAMOND REPORT

December 7, 2024	
IGI Report Number	LG668444337
Description	LABORATORY GROWN DIAMOND
Shape and Cutting Style	SQUARE EMERALD CUT
Measurements	6.73 X 6.43 X 4.28 MM

GRADING RESULTS

Carat Weight	1.72 CARAT
Color Grade	E
Clarity Grade	VS 2

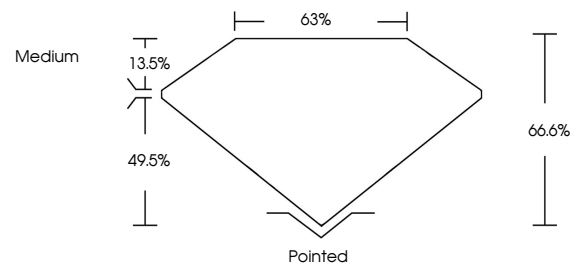
ADDITIONAL GRADING INFORMATION

Polish	EXCELLENT
Symmetry	EXCELLENT
Fluorescence	NONE
Inscription(s)	 LG668444337

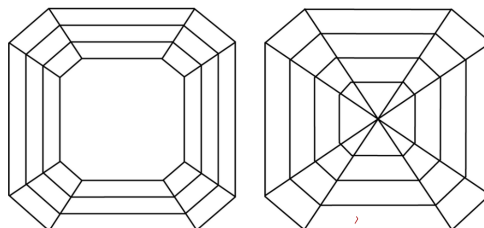
Comments: This Laboratory Grown Diamond was created by Chemical Vapor Deposition (CVD) growth process.
Type IIa

LG668444337
Report verification at igi.org

PROPORTIONS

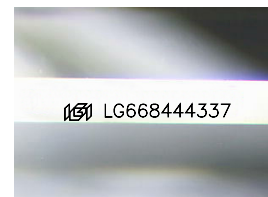


CLARITY CHARACTERISTICS



KEY TO SYMBOLS

Red symbols indicate internal characteristics.
Green symbols indicate external characteristics.



Sample Image Used

COLOR

D E F G H I J Faint Very Light Light

CLARITY

IF	VS ¹⁻²	VS ¹⁻²	SI ¹⁻²	I ¹⁻³
Internally Flawless	Very Very Slightly Included	Very Slightly Included	Slightly Included	Included

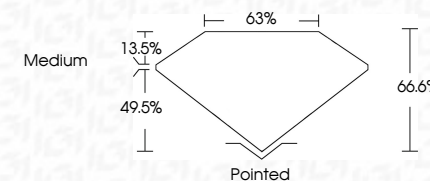
LABORATORY GROWN DIAMOND REPORT



December 7, 2024	
IGI Report Number	LG668444337
Description	LABORATORY GROWN DIAMOND
Shape and Cutting Style	SQUARE EMERALD CUT
Measurements	6.73 X 6.43 X 4.28 MM

GRADING RESULTS

Carat Weight	1.72 CARAT
Color Grade	E
Clarity Grade	VS 2



ADDITIONAL GRADING INFORMATION

Polish	EXCELLENT
Symmetry	EXCELLENT
Fluorescence	NONE
Inscription(s)	 LG668444337
Comments: This Laboratory Grown Diamond was created by Chemical Vapor Deposition (CVD) growth process.	
Type IIa	



IG

© IGI 2020, International Gemological Institute

FD - 10 20



THIS DOCUMENT WAS PRODUCED WITH THE FOLLOWING SECURITY MEASURES: SPECIAL DOCUMENT PAPER, INK SCREENS, WATERMARK, BACKGROUND DESIGNS, HOLOGRAM AND OTHER SECURITY FEATURES NOT LISTED AND DO EXCEED DOCUMENT SECURITY INDUSTRY GUIDELINES

December 7, 2024
 IGI Report No LG6688
 SQUARE EMERALD CLUB

6.73 X 6.43 X 4.28 MM	1.72 CARAT	E	VS 2	Pointed
Carat Weight			66.6%	EXCELLENT
Color Grade			65%	EXCELLENT
Clarity Grade			Medium	NONE
Depth				Fluorescence
Table				Symmetry
Girdle				Polish
				Quiet

Comments:
This Laboratory Grown Diamond was created by Chemical Vapor Deposition (CVD) growth process.