



ELECTRONIC COPY

LG668459422
Report verification at igi.org



December 7, 2024

IGI Report Number **LG668459422**

Description **LABORATORY GROWN DIAMOND**

Shape and Cutting Style **PRINCESS CUT**

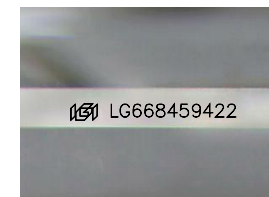
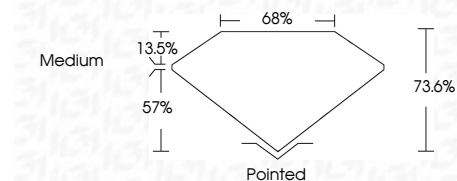
Measurements **5.84 X 5.80 X 4.27 MM**

GRADING RESULTS

Carat Weight **1.28 CARAT**

Color Grade **D**

Clarity Grade **VVS 2**



Sample Image Used

ADDITIONAL GRADING INFORMATION

Polish **EXCELLENT**

Symmetry **EXCELLENT**

Fluorescence **NONE**

Inscription(s) **IGI LG668459422**

Comments: As Grown - No indication of post-growth treatment.

This Laboratory Grown Diamond was created by High Pressure High Temperature (HPHT) growth process. Type II

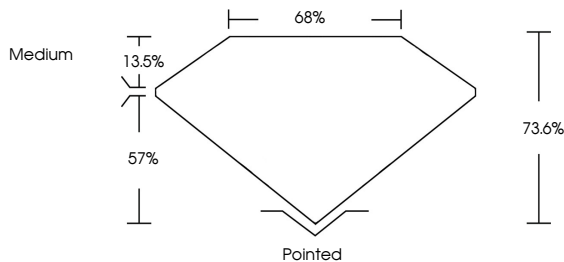


IGI

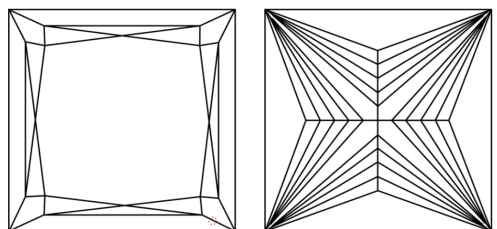
December 7, 2024	1.28 CARAT	D	73.6%	68%	Medium	Pointed
IGI Report No LG668459422	5.84 X 5.80 X 4.27 MM	VVS 2	57%	13.5%	None	EXCELLENT
PRINCESS CUT	Color Grade	Depth	Girdle	Culet	Polish	EXCELLENT
	Color Grade	Symmetry	Fluorescence	Inscription(s)		EXCELLENT
						NONE
						IGI LG668459422

Comments: As Grown - No indication of post-growth treatment. This Laboratory Grown Diamond was created by High Pressure High Temperature (HPHT) growth process. Type II

PROPORTIONS



CLARITY CHARACTERISTICS



KEY TO SYMBOLS

Red symbols indicate internal characteristics.
Green symbols indicate external characteristics.

COLOR

D	E	F	G	H	I	J	Faint	Very Light	Light
---	---	---	---	---	---	---	-------	------------	-------

CLARITY

IF	VS ¹⁻²	VS ¹⁻²	SI ¹⁻²	I ¹⁻³
Internally Flawless	Very Very Slightly Included	Very Slightly Included	Slightly Included	Included

