



ELECTRONIC COPY

LG668464305 Report verification at igi.org



December 9, 2024

IGI Report Number LG668464305

Description LABORATORY GROWN DIAMOND

Shape and Cutting Style PEAR BRILLIANT

Measurements 13.30 X 7.79 X 4.92 MM

GRADING RESULTS

Carat Weight 3.01 CARATS

Color Grade D

Clarity Grade VVS 1

December 9, 2024
IGI Report Number LG668464305
Description LABORATORY GROWN DIAMOND
Shape and Cutting Style PEAR BRILLIANT
Measurements 13.30 X 7.79 X 4.92 MM

GRADING RESULTS

Carat Weight 3.01 CARATS

Color Grade D

Clarity Grade VVS 1

ADDITIONAL GRADING INFORMATION

Polish EXCELLENT

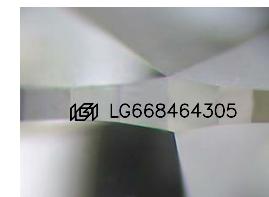
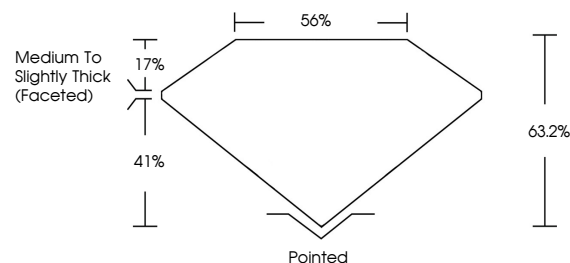
Symmetry EXCELLENT

Fluorescence NONE

Inscription(s) IGI LG668464305

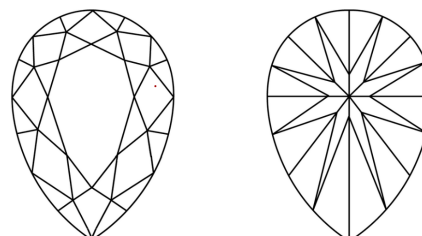
Comments: This Laboratory Grown Diamond was created by Chemical Vapor Deposition (CVD) growth process. Type IIa

PROPORTIONS



Sample Image Used

CLARITY CHARACTERISTICS



KEY TO SYMBOLS

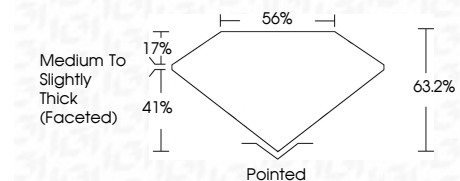
Red symbols indicate internal characteristics. Green symbols indicate external characteristics.

COLOR

D E F G H I J Faint Very Light Light

CLARITY

IF VS 1-2 VS 1-2 SI 1-2 I 1-3
Internally Flawless Very Very Slightly Included Very Slightly Included Slightly Included Included



ADDITIONAL GRADING INFORMATION

Polish EXCELLENT

Symmetry EXCELLENT

Fluorescence NONE

Inscription(s) IGI LG668464305

Comments: This Laboratory Grown Diamond was created by Chemical Vapor Deposition (CVD) growth process. Type IIa



IGI



December 9, 2024
IGI Report No. LG668464305
PEAR BRILLIANT
13.30 X 7.79 X 4.92 MM
3.01 CARATS
D
VVS 1
63.2%
65%
Medium to Slightly Thick (Faceted)
Pointed
EXCELLENT
EXCELLENT
NONE
IGI LG668464305
Comments: This Laboratory Grown Diamond was created by Chemical Vapor Deposition (CVD) growth process. Type IIa