



**ELECTRONIC COPY**

## LABORATORY GROWN DIAMOND REPORT

December 26, 2024	
IGI Report Number	LG668464463
Description	LABORATORY GROWN DIAMOND
Shape and Cutting Style	EMERALD CUT
Measurements	9.30 X 6.76 X 4.50 MM

## GRADING RESULTS

Carat Weight	2.92 CARATS
Color Grade	D
Clarity Grade	VVS 1

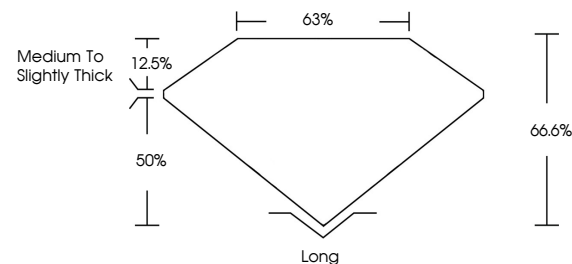
### ADDITIONAL GRADING INFORMATION

Polish	EXCELLENT
Symmetry	EXCELLENT
Fluorescence	NONE
Inscription(s)	 LG668464463

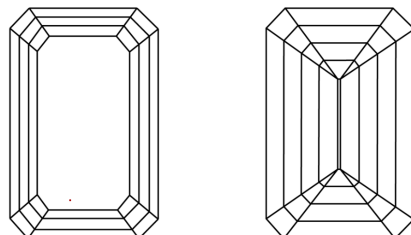
Comments: This Laboratory Grown Diamond was created by Chemical Vapor Deposition (CVD) growth process.  
Type IIa

LG668464463  
Report verification at [igi.org](https://igi.org)

## PROPORTIONS

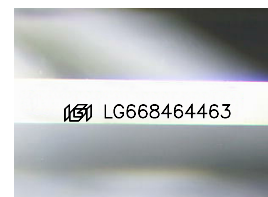


## CLARITY CHARACTERISTICS



### KEY TO SYMBOLS

Red symbols indicate internal characteristics.  
Green symbols indicate external characteristics.



Sample Image Used

## COLOR

D E F G H I J Faint Very Light Light

## CLARITY

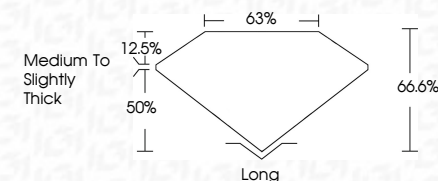
IF      VWS<sup>1-2</sup>      VS<sup>1-2</sup>      SI<sup>1-2</sup>      I<sup>1-3</sup>

Internally Flawless	Very Very Slightly Included	Very Slightly Included	Slightly Included	Included
------------------------	--------------------------------	---------------------------	----------------------	----------

## LABORATORY GROWN DIAMOND REPORT



December 26, 2024	
IGI Report Number	LG668464463
Description	LABORATORY GROWN DIAMOND
Shape and Cutting Style	EMERALD CUT
Measurements	9.30 X 6.76 X 4.50 MM
GRADING RESULTS	
Carat Weight	2.92 CARATS
Color Grade	D
Clarity Grade	VVS 1



### ADDITIONAL GRADING INFORMATION

Polish	EXCELLENT
Symmetry	EXCELLENT
Fluorescence	NONE
Inscription(s)	 LG668464463
Comments: This Laboratory Grown Diamond was created by Chemical Vapor Deposition (CVD) growth process.	
Type IIa	



© IGI 2020, International Gemological Institute

FD - 10 20



THIS DOCUMENT WAS PRODUCED WITH THE FOLLOWING SECURITY MEASURES: SPECIAL DOCUMENT PAPER, INK SCREENS, WATERMARK, BACKGROUND DESIGNS, HOLOGRAM AND OTHER SECURITY FEATURES NOT LISTED AND DO EXCEED DOCUMENT SECURITY INDUSTRY GUIDELINES

**www.igi.org**

December 26, 2024  
GI Report No LG668464463

[illegible]

**Comments:**  
This Laboratory Grown Diamond was created by Chemical Vapor Deposition (CVD) growth process.