



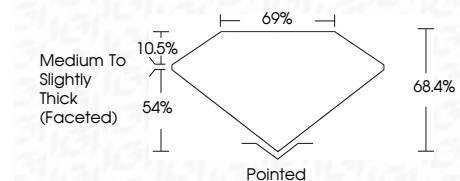
ELECTRONIC COPY

LG668467669 Report verification at igi.org



December 11, 2024 IGI Report Number LG668467669 Description LABORATORY GROWN DIAMOND Shape and Cutting Style CUSHION BRILLIANT Measurements 13.49 X 9.59 X 6.56 MM

GRADING RESULTS Carat Weight 6.54 CARATS Color Grade E Clarity Grade VVS 2



ADDITIONAL GRADING INFORMATION Polish EXCELLENT Symmetry EXCELLENT Fluorescence NONE Inscription(s) LABGROWN (IGI) LG668467669 Comments: This Laboratory Grown Diamond was created by Chemical Vapor Deposition (CVD) growth process. Type IIa



December 11, 2024 IGI Report No LG668467669 CUSHION BRILLIANT 13.49 X 9.59 X 6.56 MM 6.54 CARATS E VVS 2 68.4% 69% Medium to Slightly Thick (Faceted) Pointed EXCELLENT EXCELLENT NONE LABGROWN (IGI) LG668467669 Comments: This Laboratory Grown Diamond was created by Chemical Vapor Deposition (CVD) growth process. Type IIa

LABORATORY GROWN DIAMOND REPORT

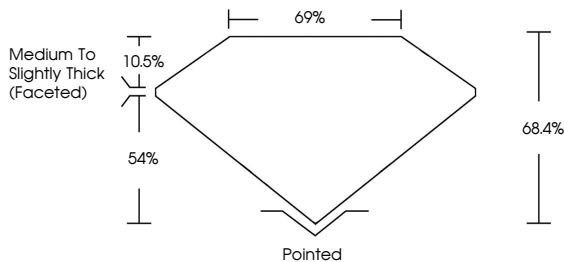
December 11, 2024 IGI Report Number LG668467669 Description LABORATORY GROWN DIAMOND Shape and Cutting Style CUSHION BRILLIANT Measurements 13.49 X 9.59 X 6.56 MM

GRADING RESULTS Carat Weight 6.54 CARATS Color Grade E Clarity Grade VVS 2

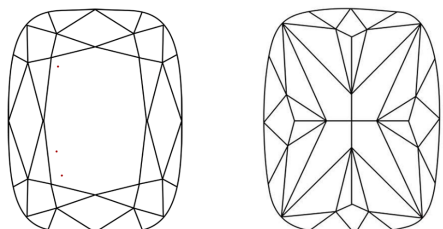
ADDITIONAL GRADING INFORMATION Polish EXCELLENT Symmetry EXCELLENT Fluorescence NONE Inscription(s) LABGROWN (IGI) LG668467669

Comments: This Laboratory Grown Diamond was created by Chemical Vapor Deposition (CVD) growth process. Type IIa

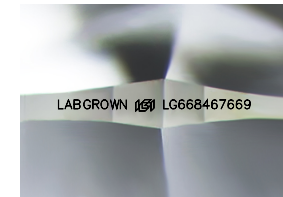
PROPORTIONS



CLARITY CHARACTERISTICS



KEY TO SYMBOLS Red symbols indicate internal characteristics. Green symbols indicate external characteristics.



Sample Image Used

Table with 5 columns: D, E, F, G, H, I, J, Faint, Very Light, Light

Table with 5 columns: IF, VS 1-2, VS 1-2, SI 1-2, I 1-3

