



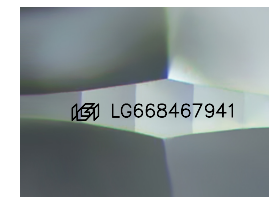
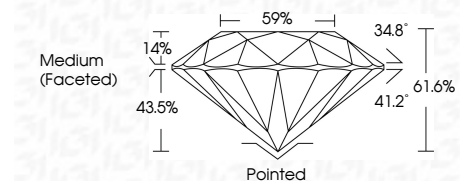
ELECTRONIC COPY

LG668467941
Report verification at igi.org



December 7, 2024
IGI Report Number LG668467941
Description LABORATORY GROWN DIAMOND
Shape and Cutting Style ROUND BRILLIANT
Measurements 10.22 - 10.26 X 6.31 MM

GRADING RESULTS
Carat Weight 4.09 CARATS
Color Grade E
Clarity Grade VS 1
Cut Grade IDEAL



Sample Image Used

ADDITIONAL GRADING INFORMATION
Polish EXCELLENT
Symmetry EXCELLENT
Fluorescence NONE
Inscription(s) IGI LG668467941
Comments: This Laboratory Grown Diamond was created by Chemical Vapor Deposition (CVD) growth process. Type IIa



December 7, 2024
IGI Report No LG668467941
ROUND BRILLIANT
4.09 CARATS E
10.22 - 10.26 X 6.31 MM
Color Grade VS 1
Clarity Grade IDEAL
Depth 61.6%
Table 59%
Girdle Medium (Faceted)
Cutler Pointed
Polish EXCELLENT
Symmetry EXCELLENT
Fluorescence NONE
Inscription(s) IGI LG668467941
Comments: This Laboratory Grown Diamond was created by Chemical Vapor Deposition (CVD) growth process. Type IIa

LABORATORY GROWN DIAMOND REPORT

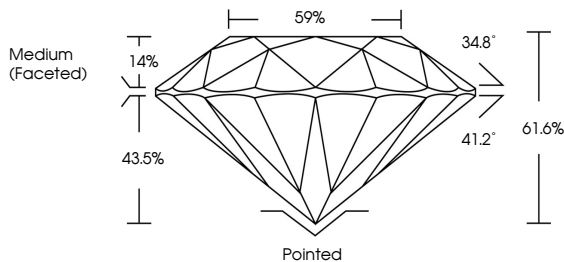
December 7, 2024
IGI Report Number LG668467941
Description LABORATORY GROWN DIAMOND
Shape and Cutting Style ROUND BRILLIANT
Measurements 10.22 - 10.26 X 6.31 MM

GRADING RESULTS
Carat Weight 4.09 CARATS
Color Grade E
Clarity Grade VS 1
Cut Grade IDEAL

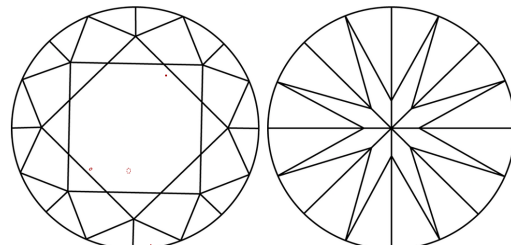
ADDITIONAL GRADING INFORMATION
Polish EXCELLENT
Symmetry EXCELLENT
Fluorescence NONE
Inscription(s) IGI LG668467941

Comments: This Laboratory Grown Diamond was created by Chemical Vapor Deposition (CVD) growth process. Type IIa

PROPORTIONS



CLARITY CHARACTERISTICS



KEY TO SYMBOLS
Red symbols indicate internal characteristics.
Green symbols indicate external characteristics.

Table with 10 columns for color grades: D, E, F, G, H, I, J, Faint, Very Light, Light.

Table with 5 columns for clarity grades: IF, VS 1-2, VS 1-2, SI 1-2, I 1-3.

