



ELECTRONIC COPY

LG668468296
Report verification at igi.org



December 12, 2024
IGI Report Number **LG668468296**
Description **LABORATORY GROWN DIAMOND**
Shape and Cutting Style **PEAR MODIFIED BRILLIANT**
Measurements **10.20 X 6.72 X 4.22 MM**
GRADING RESULTS
Carat Weight **2.06 CARATS**
Color Grade **FANCY VIVID YELLOW**
Clarity Grade **VS 2**

December 12, 2024
IGI Report Number **LG668468296**
Description **LABORATORY GROWN DIAMOND**
Shape and Cutting Style **PEAR MODIFIED BRILLIANT**
Measurements **10.20 X 6.72 X 4.22 MM**

GRADING RESULTS

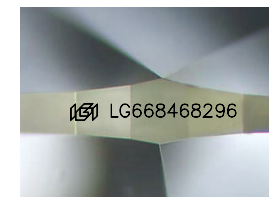
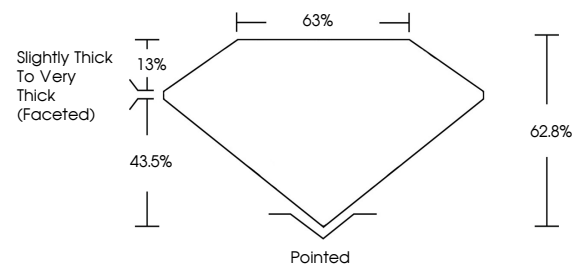
Carat Weight **2.06 CARATS**
Color Grade **FANCY VIVID YELLOW**
Clarity Grade **VS 2**

ADDITIONAL GRADING INFORMATION

Polish **EXCELLENT**
Symmetry **EXCELLENT**
Fluorescence **NONE**
Inscription(s) **IGI LG668468296**

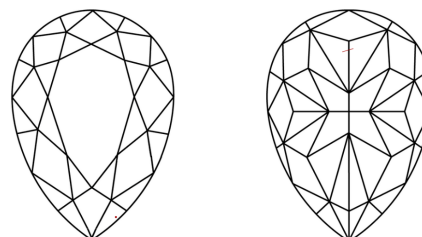
Comments: This Laboratory Grown Diamond was created by Chemical Vapor Deposition (CVD) growth process.

PROPORTIONS



Sample Image Used

CLARITY CHARACTERISTICS



KEY TO SYMBOLS

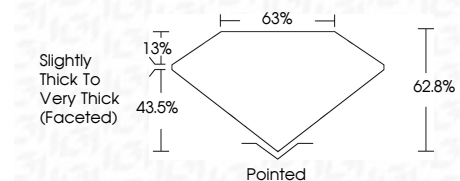
Red symbols indicate internal characteristics.
Green symbols indicate external characteristics.

COLOR

D E F G H I J Faint Very Light Light

CLARITY

IF	VS ¹⁻²	VS ¹⁻²	SI ¹⁻²	I ¹⁻³
Internally Flawless	Very Very Slightly Included	Very Slightly Included	Slightly Included	Included



ADDITIONAL GRADING INFORMATION

Polish **EXCELLENT**
Symmetry **EXCELLENT**
Fluorescence **NONE**
Inscription(s) **IGI LG668468296**
Comments: This Laboratory Grown Diamond was created by Chemical Vapor Deposition (CVD) growth process.



December 12, 2024
IGI Report No. **LG668468296**
PEAR MODIFIED BRILLIANT
10.20 X 6.72 X 4.22 MM
Carat Weight **2.06 CARATS**
Color Grade **FANCY VIVID YELLOW**
Clarity Grade **VS 2**
Depth **43.5%**
Table **63%**
Girdle **Slightly Thick To Very Thick (Faceted)**
Culet **Pointed**
Polish **EXCELLENT**
Symmetry **EXCELLENT**
Fluorescence **NONE**
Inscription(s) **IGI LG668468296**
Comments: This Laboratory Grown Diamond was created by Chemical Vapor Deposition (CVD) growth process.