



ELECTRONIC COPY

LABORATORY GROWN DIAMOND REPORT

December 10, 2024  
IGI Report Number LG668471525  
Description LABORATORY GROWN DIAMOND  
Shape and Cutting Style PRINCESS CUT  
Measurements 6.65 X 6.64 X 4.60 MM

GRADING RESULTS

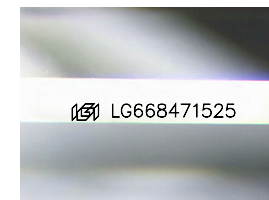
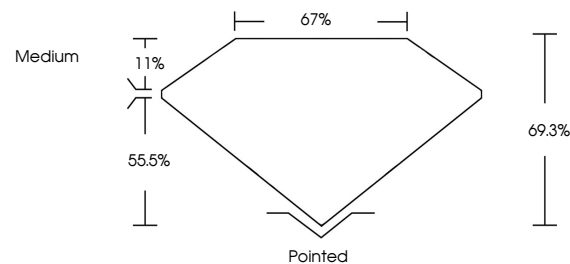
Carat Weight 1.77 CARAT  
Color Grade D  
Clarity Grade VS 1

ADDITIONAL GRADING INFORMATION

Polish EXCELLENT  
Symmetry EXCELLENT  
Fluorescence NONE  
Inscription(s) IGI LG668471525

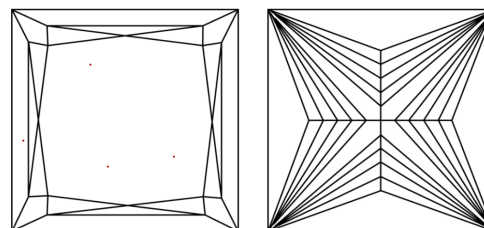
Comments: This Laboratory Grown Diamond was created by Chemical Vapor Deposition (CVD) growth process.  
Type IIa

PROPORTIONS



Sample Image Used

CLARITY CHARACTERISTICS



KEY TO SYMBOLS

Red symbols indicate internal characteristics.  
Green symbols indicate external characteristics.

COLOR

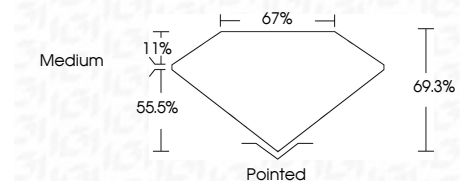
D E F G H I J Faint Very Light Light

CLARITY

IF WS<sup>1-2</sup> VS<sup>1-2</sup> SI<sup>1-2</sup> I<sup>1-3</sup>  
Internally Flawless Very Very Slightly Included Very Slightly Included Slightly Included Included



December 10, 2024  
IGI Report Number LG668471525  
Description LABORATORY GROWN DIAMOND  
Shape and Cutting Style PRINCESS CUT  
Measurements 6.65 X 6.64 X 4.60 MM  
GRADING RESULTS  
Carat Weight 1.77 CARAT  
Color Grade D  
Clarity Grade VS 1



ADDITIONAL GRADING INFORMATION

Polish EXCELLENT  
Symmetry EXCELLENT  
Fluorescence NONE  
Inscription(s) IGI LG668471525  
Comments: This Laboratory Grown Diamond was created by Chemical Vapor Deposition (CVD) growth process.  
Type IIa



December 10, 2024  
IGI Report No. LG668471525  
PRINCESS CUT  
6.65 X 6.64 X 4.60 MM  
1.77 CARAT  
D  
Color Grade  
VS 1  
Depth 69.3%  
Table 67%  
Medium  
Pointed  
EXCELLENT  
EXCELLENT  
NONE  
IGI LG668471525  
Comments: This Laboratory Grown Diamond was created by Chemical Vapor Deposition (CVD) growth process.  
Type IIa