



ELECTRONIC COPY

LG669407033
Report verification at igi.org



December 10, 2024

IGI Report Number **LG669407033**

Description **LABORATORY GROWN DIAMOND**

Shape and Cutting Style **CUT CORNERED
RECTANGULAR MODIFIED
BRILLIANT**

Measurements **9.02 X 6.21 X 4.07 MM**

GRADING RESULTS

Carat Weight **1.95 CARAT**

Color Grade **E**

Clarity Grade **VVS 2**

December 10, 2024

IGI Report Number **LG669407033**

Description **LABORATORY GROWN DIAMOND**

Shape and Cutting Style **CUT CORNERED RECTANGULAR
MODIFIED BRILLIANT**

Measurements **9.02 X 6.21 X 4.07 MM**

GRADING RESULTS

Carat Weight **1.95 CARAT**

Color Grade **E**

Clarity Grade **VVS 2**

ADDITIONAL GRADING INFORMATION

Polish **EXCELLENT**

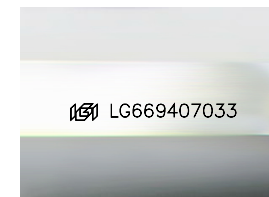
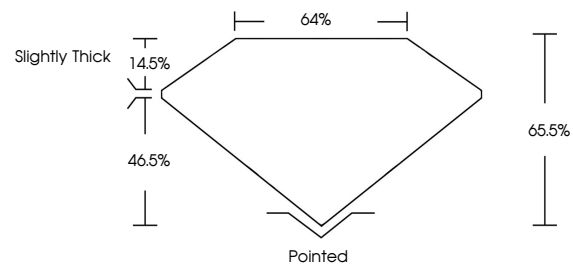
Symmetry **EXCELLENT**

Fluorescence **NONE**

Inscription(s) **IGI LG669407033**

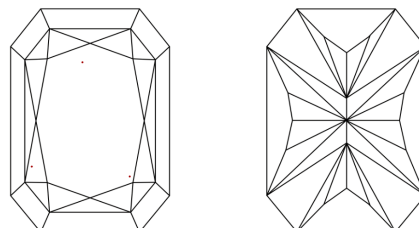
Comments: This Laboratory Grown Diamond was created by Chemical Vapor Deposition (CVD) growth process.
Type IIa

PROPORTIONS



Sample Image Used

CLARITY CHARACTERISTICS



KEY TO SYMBOLS

Red symbols indicate internal characteristics.
Green symbols indicate external characteristics.

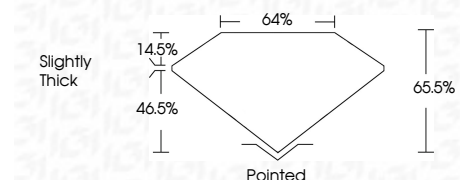
COLOR

D E F G H I J Faint Very Light Light

CLARITY

IF VS¹⁻² VS¹⁻² SI¹⁻² I¹⁻³

Internally Flawless Very Very Slightly Included Very Slightly Included Slightly Included Included



ADDITIONAL GRADING INFORMATION

Polish **EXCELLENT**

Symmetry **EXCELLENT**

Fluorescence **NONE**

Inscription(s) **IGI LG669407033**

Comments: This Laboratory Grown Diamond was created by Chemical Vapor Deposition (CVD) growth process.
Type IIa



IGI



December 10, 2024
IGI Report No LG669407033
CUT CORNERED RECT. MODIFIED BRILLIANT
9.02 X 6.21 X 4.07 MM
1.95 CARAT
E
VVS 2
65.5%
46.5%
14.5%
Slightly Thick
Pointed
EXCELLENT
EXCELLENT
NONE
IGI LG669407033

Comments: This Laboratory Grown Diamond was created by Chemical Vapor Deposition (CVD) growth process.
Type IIa