



ELECTRONIC COPY

LG669415560
Report verification at igi.org



December 16, 2024

IGI Report Number **LG669415560**

Description **LABORATORY GROWN DIAMOND**

Shape and Cutting Style **PRINCESS CUT**

Measurements **7.79 X 7.68 X 5.40 MM**

GRADING RESULTS

Carat Weight **2.82 CARATS**

Color Grade **E**

Clarity Grade **VS 1**

December 16, 2024
IGI Report Number **LG669415560**
Description **LABORATORY GROWN DIAMOND**
Shape and Cutting Style **PRINCESS CUT**
Measurements **7.79 X 7.68 X 5.40 MM**

GRADING RESULTS

Carat Weight **2.82 CARATS**

Color Grade **E**

Clarity Grade **VS 1**

ADDITIONAL GRADING INFORMATION

Polish **EXCELLENT**

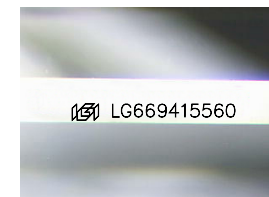
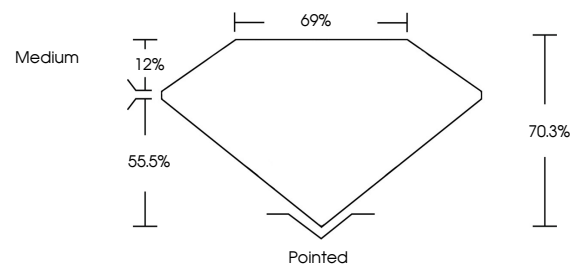
Symmetry **EXCELLENT**

Fluorescence **NONE**

Inscription(s) **IGI LG669415560**

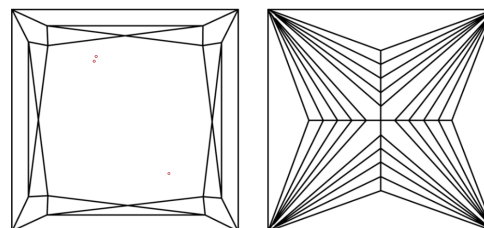
Comments: This Laboratory Grown Diamond was created by Chemical Vapor Deposition (CVD) growth process.
Type IIa

PROPORTIONS



Sample Image Used

CLARITY CHARACTERISTICS



KEY TO SYMBOLS

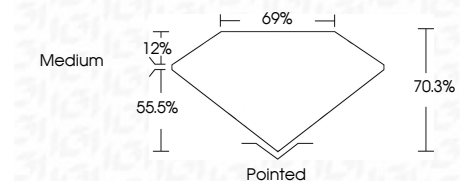
Red symbols indicate internal characteristics.
Green symbols indicate external characteristics.

COLOR

D E F G H I J Faint Very Light Light

CLARITY

IF	VS ¹⁻²	VS ¹⁻²	SI ¹⁻²	I ¹⁻³
Internally Flawless	Very Very Slightly Included	Very Slightly Included	Slightly Included	Included



ADDITIONAL GRADING INFORMATION

Polish **EXCELLENT**

Symmetry **EXCELLENT**

Fluorescence **NONE**

Inscription(s) **IGI LG669415560**

Comments: This Laboratory Grown Diamond was created by Chemical Vapor Deposition (CVD) growth process.
Type IIa



December 16, 2024
IGI Report No LG669415560
PRINCESS CUT

2.82 CARATS
E

7.79 X 7.68 X 5.40 MM

Carat Weight
Color Grade
Clarity Grade
Table
Depth
Girdle
Medium

Pointed
EXCELLENT
EXCELLENT
NONE
IGI LG669415560

Culet
Polish
Symmetry
Fluorescence
Inscription(s)

Comments: This Laboratory Grown Diamond was created by Chemical Vapor Deposition (CVD) growth process.
Type IIa