

**ELECTRONIC COPY**

## LABORATORY GROWN DIAMOND REPORT

April 3, 2025	
IGI Report Number	LG669421111
Description	LABORATORY GROWN DIAMOND
Shape and Cutting Style	ROUND BRILLIANT
Measurements	9.57 - 9.65 X 5.84 MM

## GRADING RESULTS

Carat Weight	3.35 CARATS
Color Grade	E
Clarity Grade	INTERNALLY FLAWLESS
Cut Grade	IDEAL

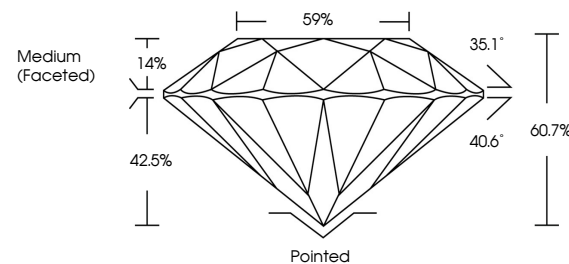
### ADDITIONAL GRADING INFORMATION

Polish	EXCELLENT
Symmetry	EXCELLENT
Fluorescence	NONE
Inscription(s)	 LG669421111

Comments: As Grown - No indication of post-growth treatment.  
This Laboratory Grown Diamond was created by High Pressure High Temperature (HPHT) growth process.  
Type II

LG669421111  
Report verification at [igi.org](http://igi.org)

## PROPORTIONS

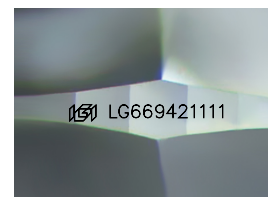


## CLARITY CHARACTERISTICS



## KEY TO SYMBOLS

Red symbols indicate internal characteristics.  
Green symbols indicate external characteristics.



Sample Image Used

**COLOR**

D E F G H I J Faint Very Light Light

## CLARITY

IF                      VWS<sup>1-2</sup>                      VS<sup>1-2</sup>                      SI<sup>1-2</sup>                      I<sup>1-3</sup>

Internally Flawless	Very Very Slightly Included	Very Slightly Included	Slightly Included	Included
------------------------	--------------------------------	---------------------------	----------------------	----------

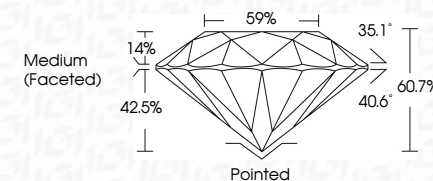
## LABORATORY GROWN DIAMOND REPORT



April 3, 2025	
IGI Report Number	LG669421111
Description	LABORATORY GROWN DIAMOND
Shape and Cutting Style	ROUND BRILLIANT
Measurements	9.57 - 9.65 X 5.84 MM

## GRADING RESULTS

Carat Weight	3.35 CARATS
Color Grade	E
Clarity Grade	INTERNALLY FLAWLESS
Cut Grade	IDEAL



### ADDITIONAL GRADING INFORMATION

Polish	EXCELLENT
Symmetry	EXCELLENT
Fluorescence	NONE
Inscription(s)	 LG669421111
Comments: As Grown - No indication of post-growth treatment.	
This Laboratory Grown Diamond was created by High Pressure High Temperature (HPHT) growth process.	
Type II	



© IGI 2020, International Gemological Institute

FD - 10 20

April 3, 2025  
 IGI Report No LG669421111  
 ROUNDBRILLANT

9.57 - 9.65 X 5.64 MM	3.36 CARATS	
Carat Weight	IF	Pointed
Color Grade	IDEAL	EXCELLENT
Clarity Grade	60.7%	EXCELLENT
Cut Grade	59%	NONE
Depth	Medium (Faceted)	
Table		
Girdle		
Culet		
Polish		
Symmetry		
Fluorescence		

**Comments:**  
As Grown - No indication of post-growth treatment.  
This Laboratory Grown Diamond was created by High Pressure High Temperature (HPHT) growth process.