



ELECTRONIC COPY

LG669431053
Report verification at igi.org



December 18, 2024

IGI Report Number **LG669431053**

Description **LABORATORY GROWN DIAMOND**

Shape and Cutting Style **EMERALD CUT**

Measurements **11.79 X 8.10 X 5.41 MM**

GRADING RESULTS

Carat Weight **5.18 CARATS**

Color Grade **F**

Clarity Grade **VS 1**

December 18, 2024

IGI Report Number **LG669431053**

Description **LABORATORY GROWN DIAMOND**

Shape and Cutting Style **EMERALD CUT**

Measurements **11.79 X 8.10 X 5.41 MM**

GRADING RESULTS

Carat Weight **5.18 CARATS**

Color Grade **F**

Clarity Grade **VS 1**

ADDITIONAL GRADING INFORMATION

Polish **EXCELLENT**

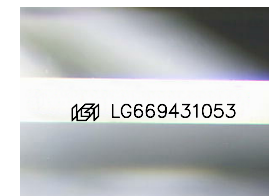
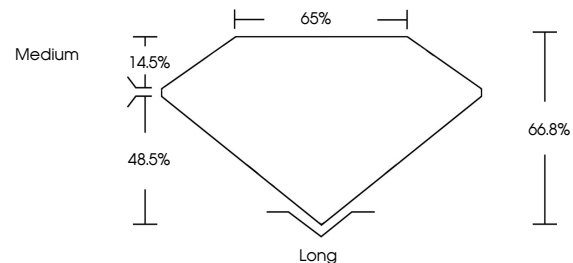
Symmetry **EXCELLENT**

Fluorescence **NONE**

Inscription(s) **IGI LG669431053**

Comments: This Laboratory Grown Diamond was created by Chemical Vapor Deposition (CVD) growth process.
Type IIa

PROPORTIONS



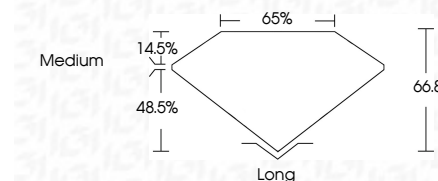
Sample Image Used

COLOR

D E F G H I J Faint Very Light Light

CLARITY

| IF | VS ¹⁻² | VS ¹⁻² | SI ¹⁻² | I ¹⁻³ |
|---------------------|-----------------------------|------------------------|-------------------|------------------|
| Internally Flawless | Very Very Slightly Included | Very Slightly Included | Slightly Included | Included |



ADDITIONAL GRADING INFORMATION

Polish **EXCELLENT**

Symmetry **EXCELLENT**

Fluorescence **NONE**

Inscription(s) **IGI LG669431053**

Comments: This Laboratory Grown Diamond was created by Chemical Vapor Deposition (CVD) growth process.
Type IIa



IGI



December 18, 2024
IGI Report No. LG669431053
EMERALD CUT

5.18 CARATS
F

11.79 X 8.10 X 5.41 MM

Carat Weight
Color Grade
Clarity Grade
Table
Depth
Girdle
Medium

66.8%
48.5%
65%

Long
EXCELLENT
EXCELLENT
NONE
IGI LG669431053

Culet
Polish
Symmetry
Fluorescence
Inscription(s)

Comments: This Laboratory Grown Diamond was created by Chemical Vapor Deposition (CVD) growth process.
Type IIa