



ELECTRONIC COPY

LG669433041
Report verification at igi.org



December 16, 2024

IGI Report Number **LG669433041**

Description **LABORATORY GROWN DIAMOND**

Shape and Cutting Style **CUSHION BRILLIANT**

Measurements **9.98 X 7.89 X 5.18 MM**

GRADING RESULTS

Carat Weight **3.21 CARATS**

Color Grade **G**

Clarity Grade **VS 1**

December 16, 2024

IGI Report Number **LG669433041**

Description **LABORATORY GROWN DIAMOND**

Shape and Cutting Style **CUSHION BRILLIANT**

Measurements **9.98 X 7.89 X 5.18 MM**

GRADING RESULTS

Carat Weight **3.21 CARATS**

Color Grade **G**

Clarity Grade **VS 1**

ADDITIONAL GRADING INFORMATION

Polish **EXCELLENT**

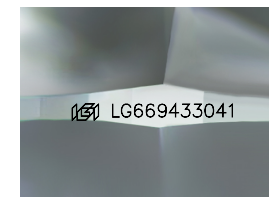
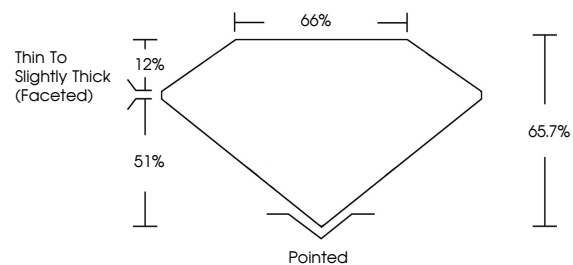
Symmetry **EXCELLENT**

Fluorescence **NONE**

Inscription(s) **IGI LG669433041**

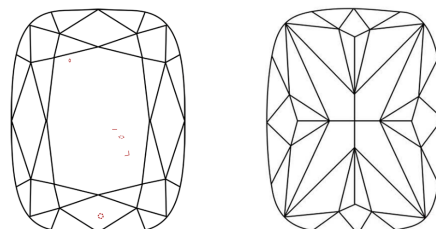
Comments: This Laboratory Grown Diamond was created by Chemical Vapor Deposition (CVD) growth process.
Type IIa

PROPORTIONS



Sample Image Used

CLARITY CHARACTERISTICS



KEY TO SYMBOLS

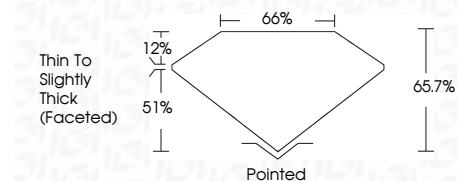
Red symbols indicate internal characteristics.
Green symbols indicate external characteristics.

COLOR

D E F G H I J Faint Very Light Light

CLARITY

| | | | | |
|---------------------|-----------------------------|------------------------|-------------------|------------------|
| IF | VS ¹⁻² | VS ¹⁻² | SI ¹⁻² | I ¹⁻³ |
| Internally Flawless | Very Very Slightly Included | Very Slightly Included | Slightly Included | Included |



ADDITIONAL GRADING INFORMATION

Polish **EXCELLENT**

Symmetry **EXCELLENT**

Fluorescence **NONE**

Inscription(s) **IGI LG669433041**

Comments: This Laboratory Grown Diamond was created by Chemical Vapor Deposition (CVD) growth process.
Type IIa



IGI



December 16, 2024
IGI Report No LG669433041
CUSHION BRILLIANT

9.98 X 7.89 X 5.18 MM

3.21 CARATS
G

Color Grade
G

Clarity Grade
VS 1

Depth
65.7%

Table
65%

Girdle
Thin to Slightly Thick (Faceted)

Culet
Pointed

Polish
EXCELLENT

Symmetry
EXCELLENT

Fluorescence
NONE

Inscription(s)
IGI LG669433041

Comments: This Laboratory Grown Diamond was created by Chemical Vapor Deposition (CVD) growth process.
Type IIa