



ELECTRONIC COPY

LG669449347
Report verification at igi.org

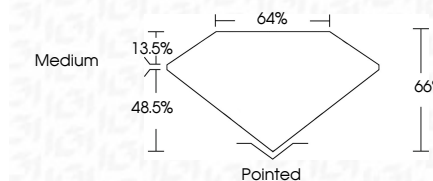


December 14, 2024
IGI Report Number **LG669449347**
Description **LABORATORY GROWN DIAMOND**
Shape and Cutting Style **CUT CORNERED
RECTANGULAR MODIFIED
BRILLIANT**

Measurements **14.56 X 9.84 X 6.49 MM**

GRADING RESULTS

Carat Weight **8.05 CARATS**
Color Grade **F**
Clarity Grade **VS 1**

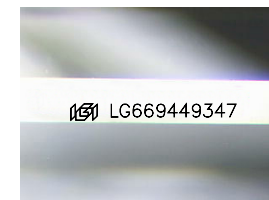


ADDITIONAL GRADING INFORMATION

Polish **EXCELLENT**
Symmetry **EXCELLENT**
Fluorescence **NONE**
Inscription(s) **IGI LG669449347**
Comments: This Laboratory Grown Diamond was created by Chemical Vapor Deposition (CVD) growth process. Type IIa

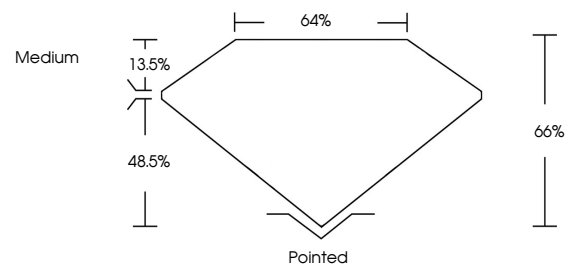


December 14, 2024
IGI Report No. LG669449347
CUT CORNERED RECT. MODIFIED BRILLIANT
14.56 X 9.84 X 6.49 MM
8.05 CARATS
F
VS 1
66%
48.5%
Medium
Pointed
EXCELLENT
EXCELLENT
NONE
IGI LG669449347
Comments: This Laboratory Grown Diamond was created by Chemical Vapor Deposition (CVD) growth process. Type IIa

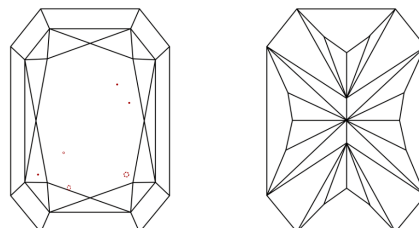


Sample Image Used

PROPORTIONS



CLARITY CHARACTERISTICS



KEY TO SYMBOLS

Red symbols indicate internal characteristics.
Green symbols indicate external characteristics.

COLOR

D E F G H I J Faint Very Light Light

CLARITY

IF	VS ¹⁻²	VS ¹⁻²	SI ¹⁻²	I ¹⁻³
Internally Flawless	Very Very Slightly Included	Very Slightly Included	Slightly Included	Included

